
LEARN IT WELL.



KEEP IT ALWAYS.

At Berry, your

INTELLECTUAL DEVELOPMENT, PRACTICAL LEARNING EXPERIENCES

and

PERSONAL DISCOVERY

will be carefully connected
and constantly deepened through
mentorship and reflection.

*This gives them context and substance.
Which makes them last.*

6

ACADEMICS

Advising, faculty, majors and minors

8

THE BERRY COMPACT

Our signature approach (and commitment)

10

A CULTURE OF MENTORSHIP

Guides for the rest of your life

14

THE WORLD'S LARGEST CAMPUS

Unique facilities, many ecosystems

16

LIFEWORKS

Eight semesters of guaranteed paid professional development

18

LIFE AT BERRY

Clubs, activities and athletics

20

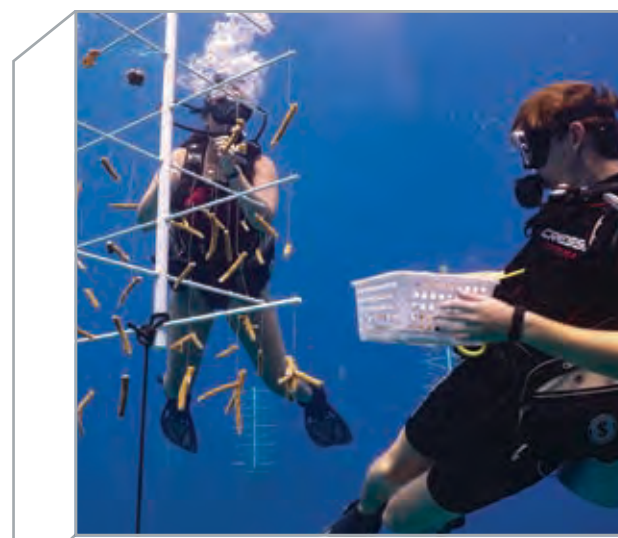
OUTCOMES

Our graduates' success

22

NEXT STEPS

Admission, financial aid, scholarships and visiting



IN 1902, BELIEVING THAT A QUALITY EDUCATION SHOULD BE AVAILABLE TO ALL,

our founder Martha Berry started a school with the idea that her students would help build and maintain it. Today's students remain equally invested in taking ownership of their educations. And Berry remains equally committed to partnering with students and families to make this education — and its lifelong value — possible.



SEEK CHALLENGE.

FIND SUPPORT.

You are wonderfully unique.
Your education should be equally so.

HERE, YOU WILL DEVELOP A FOUR-YEAR PLAN that relates your academic interests and professional goals to relevant practical learning experiences.

YOU WILL BE GUIDED BY TRUSTED MENTORS who understand your goals and dreams, connect you with life-changing opportunities and consider your well-being as important as their own.

(Come see what's possible when people walking different paths come together with common purpose.)

75+ MAJORS, MINORS AND CONCENTRATIONS as well as pre-professional tracks in pre-dentistry, pre-law, pre-medicine, pre-pharmacy and pre-veterinary medicine

92% of Berry faculty members HOLD A PH.D. OR THE HIGHEST DEGREE in their field.

TOP 10% RANKING OF BERRY'S STUDENT/FACULTY INTERACTION (according to the National Survey of Student Engagement)

400 SCHOLARLY ARTICLES and **40** BOOKS published by Berry faculty over the past five years

65 scholarly articles CO-AUTHORED BY BERRY STUDENTS in the past year

1,100 number of PRESENTATIONS BY BERRY FACULTY at major professional conferences over the past five years

190 presentations for which BERRY STUDENTS HAVE BEEN CO-PRESENTERS in the past five years

10 OFFICE HOURS (at least) per week offered by each Berry professor

48,600 OFFICE HOURS (at least) available to Berry students throughout the school year

LEARN FROM THE BEST.

CONSIDER THIS:

Your interests and ambitions

Your unique contributions

THE IDEAL EDUCATION HAS YOU AT ITS CENTER.

Your ideas in open conversation

Your questions

The ideal education invites you to engage.

Your values

MAKE THEM EVEN BETTER.



TEACHERS. SCHOLARS. MENTORS.

THEIR BEST WORK IS DONE WHEN STANDING ELBOW-TO-ELBOW WITH STUDENTS. Whatever they're teaching, thinking, making, shaping, exploring or discovering at any given time, THEIR WORK IS ENHANCED BY YOUR CONTRIBUTIONS.



THERE'S ONLY ONE BERRY.

Here, you'll learn how to think and write and communicate with clarity and confidence. You'll apply your learning in practical contexts, over and over, until it really sticks.

ACADEMIC EXCELLENCE (in its many forms) IS THE FOUNDATION OF EVERYTHING THAT HAPPENS HERE.

BUT IT'S EVERYTHING ELSE — distinctive experiences that amplify learning and uniquely prepare you for whatever comes next — **THAT PLACES THE BERRY EDUCATION IN A CATEGORY OF ITS OWN.** (That's what the rest of this book is about.)

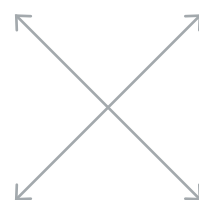
BERRY'S MORE THAN 75 MAJORS, MINORS, CONCENTRATIONS AND PRE-PROFESSIONAL PROGRAMS broaden your understanding, expand your intellectual toolkit and prepare you for mastery of a future that demands not only deep knowledge of your discipline but also the ability to move nimbly between an abundance of ideas and perspectives.

- Accounting
- Animal Science
- Concentrations:
 - Pre-Vet/Pre-Professional Science
 - Production Management
- Applied Behavioral Analysis
- Applied Physics
- Art
 - Concentrations: Art Education, Art History, Studio Art
- Biochemistry
- Biology
 - Concentrations: Integrative Biology, Wildlife, Ecology and Conservation
- Cellular and Biomedical Business (minor only)
- Chemistry
- Communication
 - Concentrations: Digital Storytelling, Public Relations
- Sports
 - Communication
 - Filmmaking & Cinematic Arts
- Communication Studies
- Creative
 - Technologies
 - Creative Writing
 - Dance (minor only)
 - Early Childhood Education
 - Economics
 - Elementary Education
 - English
 - Entrepreneurship & Innovation (minor only)
 - Environmental Science
 - Environmental Studies
 - Concentrations: Environmental Studies, Environmental Policy Studies
 - Exercise Science
 - Family Studies (minor only)
 - Finance
 - French
 - Geology (minor only)
 - German
 - History
 - Individually Designed Major
 - International Business
 - International Affairs
 - Legal Studies (minor only)
- Management
 - Marketing
 - Mathematics
 - Concentrations: Computer Science, Mathematics
 - Mathematics Education
 - Middle Grades Education
 - Music
 - Music Education
 - Music with Elective Studies in Business
 - Music Performance
 - Musical Theatre (minor only)
 - One Health Science (minor only)
 - Nursing
 - Philosophy
 - Physics
 - Concentrations: Professional Track, General Physics
 - Political Science
 - Psychology
 - Public Relations (minor only)
 - Religion (minor only)
 - Secondary Education
 - Social
 - Entrepreneurship (minor only)
 - Sociology & Anthropology
 - Spanish
 - Sports
 - Administration
 - Teaching English as a Foreign Language (minor only)
 - Theatre
 - Web Development (minor only)
 - Women's and Gender Studies (minor only)
- DUAL-DEGREE PROGRAMS**
 - Engineering with Georgia Institute of Technology
 - School of Engineering or Kennesaw State University
- PRE-PROFESSIONAL PROGRAMS**
 - Pre-Veterinary
 - Pre-Medicine
 - Pre-Dental
 - Pre-Pharmacy
 - Pre-Health Professions
 - Pre-Law
 - Pre-Physical Therapy

See the full list (including minors and concentrations) at: BERRY.EDU/ACADEMICS/MAJORS



CONTRIBUTE WITH PURPOSE.



RECEIVE WITH NO LIMIT.



SINCE OUR FOUNDING, BERRY HAS THRIVED ON THE IDEA OF SHARED COMMITMENT:

Martha Berry provided a quality education. Her students helped build the school and contribute to its daily operation.

The spirit of reciprocity continues today through The Berry Compact, a distinctive approach to education in which students take uncommon ownership of their college experience while receiving extraordinary mentorship and unmatched opportunities for professional and personal development.

What we provide:

A FOUR-YEAR PLAN

that carefully integrates classroom studies, experiential learning, purposeful reflection and personal development, guided by Berry's Center for Personal and Professional Development.

OUR LANDMARK LIFEWORKS PROGRAM,

which guarantees eight semesters of paid professional development to every Berry student, with the opportunity for significant leadership and management experience (*learn more on page 16*).

A CELEBRATED CULTURE OF MENTORSHIP AND SUPPORT

that helps our students develop as scholars, test and strengthen their character and thrive in every aspect of their lives (*learn more on page 10*).

In turn, we ask you to truly engage in life and learning at Berry:

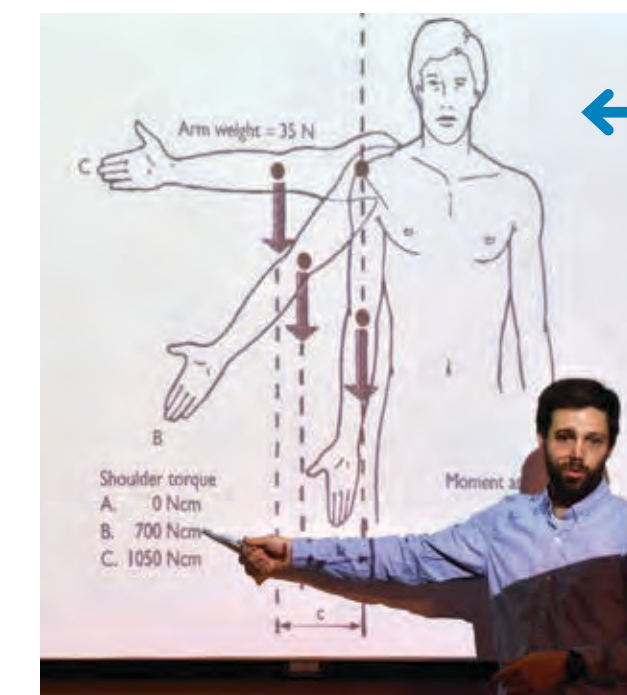
TAKE OWNERSHIP BY CONTRIBUTING TO THE DAILY WORK OF MAINTAINING YOUR COLLEGE,

choosing among more than 1,000+ possibilities and filling key roles in any of our 180 departments (*learn more on page 16*).

SHOW UP AND DIG IN, sharing your experience, opinion and energy with the Berry community — in class and everywhere else.

USE WHAT YOU LEARN HERE FOR THE GOOD, putting your education in motion for the benefit of the Berry community and the larger world.

THE RESULT IS AN EDUCATION THAT IS NOT JUST UNIQUE BUT ALSO IMPOSSIBLE TO DUPLICATE.



The essential core of the Berry education is a student-faculty partnership that results in a

FOUR-YEAR SEQUENCE OF INTROSPECTION, EXPERIENCE, GROWTH AND REFLECTION.

It ensures the things you learn will relate to the things you do and the person you become.



Intellectual



Practical



Personal

FIRST YEAR

→ Connect with your faculty mentor; identify ideas that excite you.

→ Start your first campus job (equivalent of entry-level internship).

→ Make friends, learn to set goals and find your place in the Berry community.

SECOND YEAR

→ Choose or affirm your major; take courses that challenge you.

→ Select a job with increased responsibility — one that complements your studies.

→ Build character through leadership; identify mentors and post-graduate goals.

THIRD YEAR

→ Deepen your study through a hands-on project or experience.

→ Take a job with a significant management or mentoring component; prepare for graduate school or job applications.

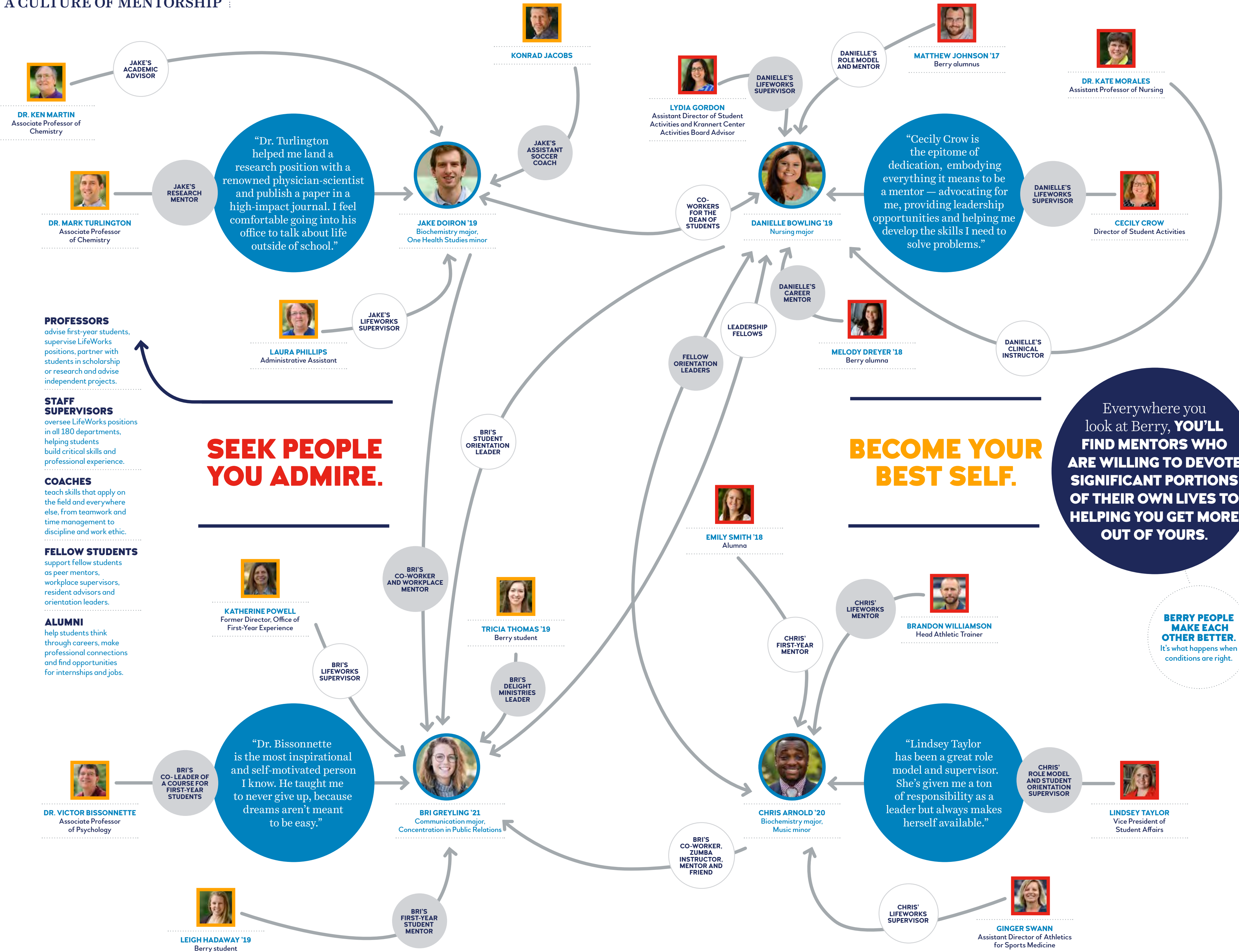
→ Evaluate your post-college goals; reflect upon and articulate your values and ambitions.

FOURTH YEAR

→ Prepare to discuss your intellectual growth and accomplishments (this will help you in job interviews).

→ Reflect upon your growth in work and leadership; train and mentor younger peers.

→ Create a plan for your next five years; remember that Berry will always be home.



PROFESSORS
advise first-year students, supervise LifeWorks positions, partner with students in scholarship or research and advise independent projects.

STAFF SUPERVISORS
oversee LifeWorks positions in all 180 departments, helping students build critical skills and professional experience.

COACHES
teach skills that apply on the field and everywhere else, from teamwork and time management to discipline and work ethic.

FELLOW STUDENTS
support fellow students as peer mentors, workplace supervisors, resident advisors and orientation leaders.

ALUMNI
help students think through careers, make professional connections and find opportunities for internships and jobs.

SEEK PEOPLE YOU ADMIRE.

BECOME YOUR BEST SELF.

Everywhere you look at Berry, **YOU'LL FIND MENTORS WHO ARE WILLING TO DEVOTE SIGNIFICANT PORTIONS OF THEIR OWN LIVES TO HELPING YOU GET MORE OUT OF YOURS.**

BERRY PEOPLE MAKE EACH OTHER BETTER.
It's what happens when conditions are right.

EXPLORE THE WORLD.

MAKE IT YOUR OWN.

YOUR LIFE ON THIS CAMPUS

(the world's largest) will be distinguished by daily opportunities to make positive contributions — while logging invaluable professional experience.

YOUR LIFE IN THIS COMMUNITY

will be a joyful celebration of friendship and new ideas, centered around the people and pursuits you most enjoy.

YOUR LIFE AFTER BERRY

will be built on a solid foundation of knowledge, preparation and lasting connections.

(From the moment you join this community — and for the rest of your life — you'll be part of something bigger than yourself.)

1,000+
ON-CAMPUS
PROFESSIONAL
DEVELOPMENT
OPTIONS

9
average HOURS PER
WEEK students spend
ON PROFESSIONAL
DEVELOPMENT

\$5 MILLION
ANNUAL STUDENT
PAYROLL for
LifeWorks program

99%
of students participate
in LifeWorks.

27,000
ACRE CAMPUS

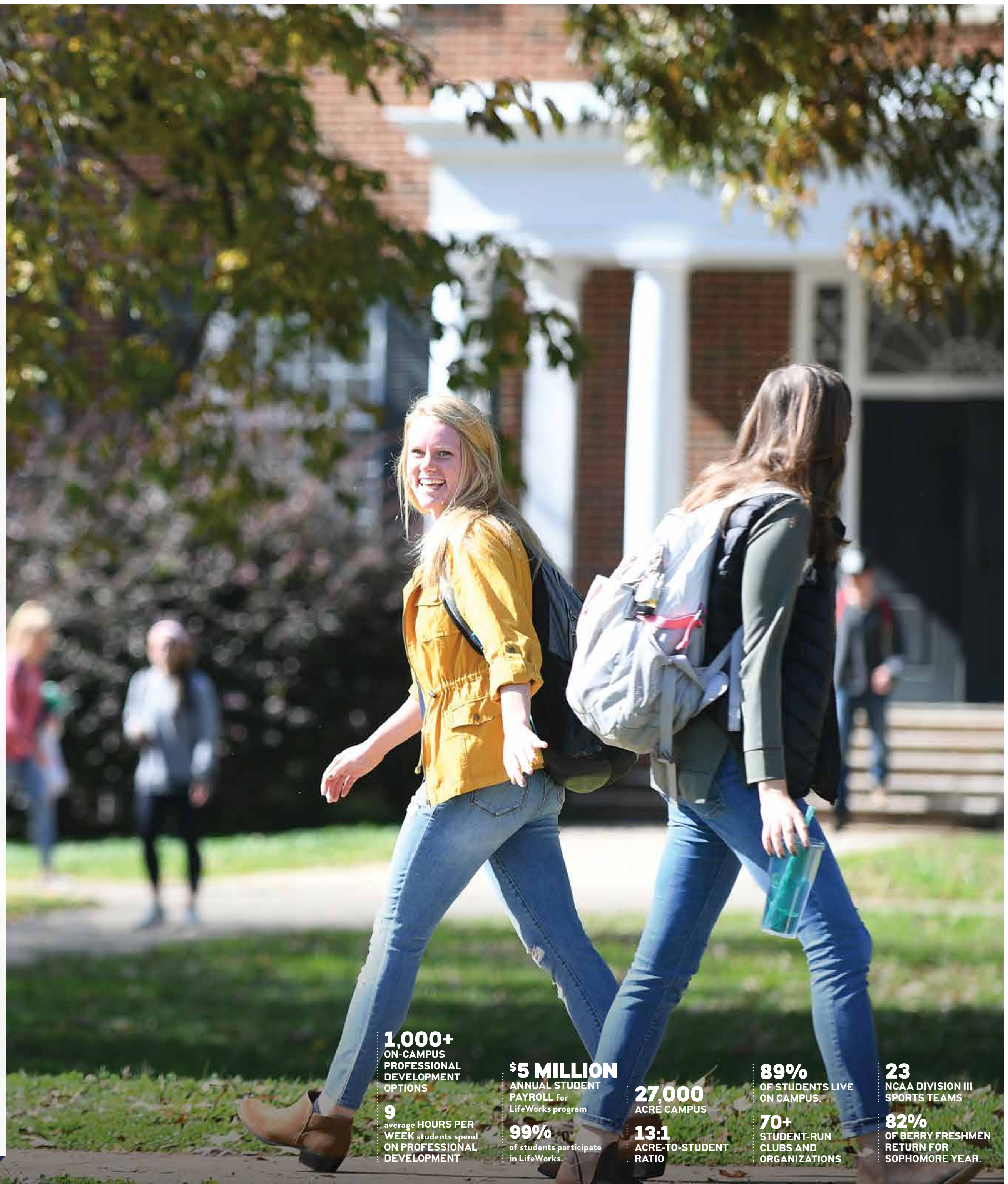
13:1
ACRE-TO-STUDENT
RATIO

89%
OF STUDENTS LIVE
ON CAMPUS.

70+
STUDENT-RUN
CLUBS AND
ORGANIZATIONS

23
NCAA DIVISION III
SPORTS TEAMS

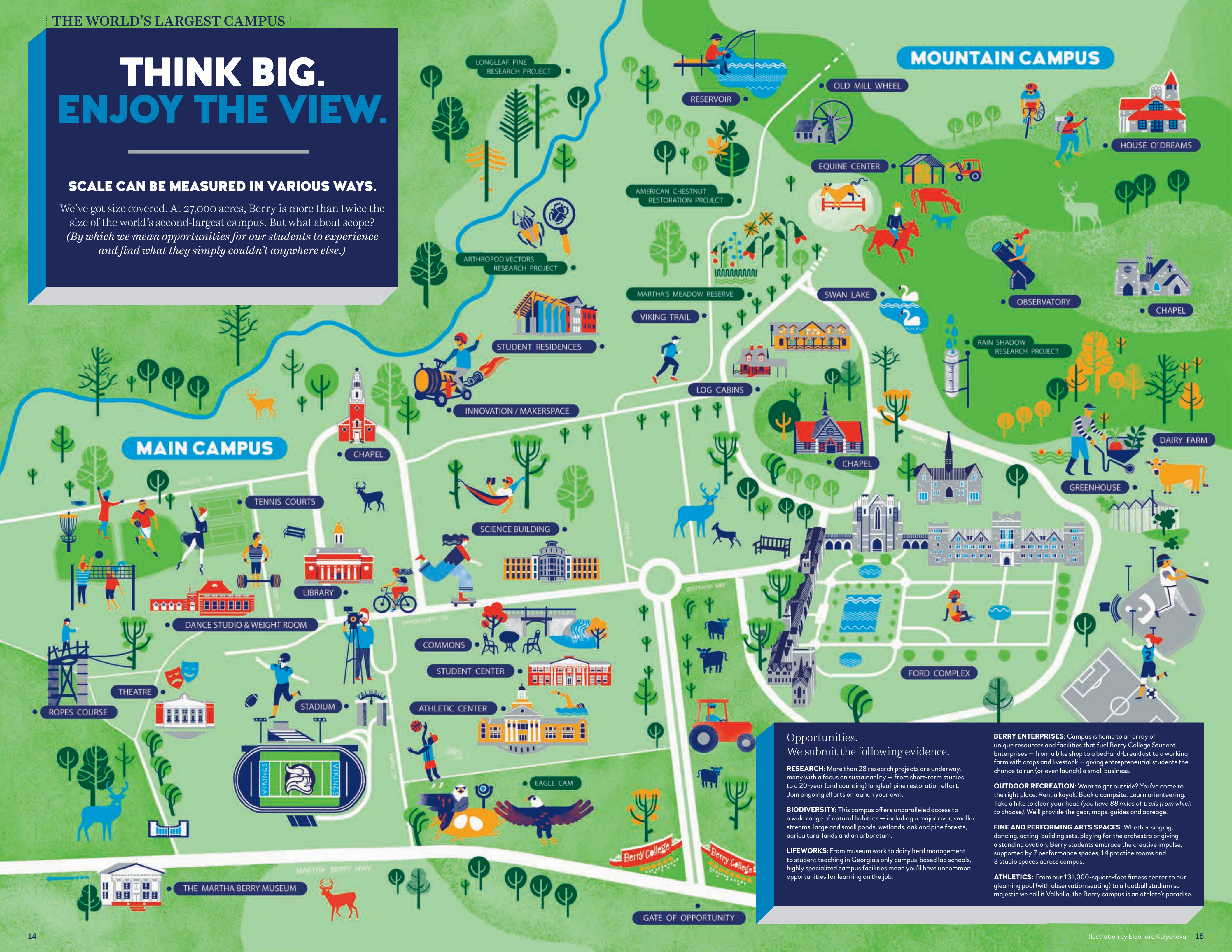
82%
OF BERRY FRESHMEN
RETURN FOR
SOPHOMORE YEAR.



THINK BIG. ENJOY THE VIEW.

SCALE CAN BE MEASURED IN VARIOUS WAYS.

We've got size covered. At 27,000 acres, Berry is more than twice the size of the world's second-largest campus. But what about scope? *(By which we mean opportunities for our students to experience and find what they simply couldn't anywhere else.)*



Opportunities. We submit the following evidence.

RESEARCH: More than 28 research projects are underway, many with a focus on sustainability — from short-term studies to a 20-year (and counting) longleaf pine restoration effort. Join ongoing efforts and launch your own.

BIODIVERSITY: This campus offers unparalleled access to a wide range of natural habitats — including a major river, smaller streams, large and small ponds, wetlands, oak and pine forests, agricultural lands and an arboretum.

LIFEWORKS: From museum work to dairy herd management to student teaching in Georgia's only campus-based lab schools, highly specialized campus facilities mean you'll have uncommon opportunities for learning on the job.

BERRY ENTERPRISES: Campus is home to an array of unique resources and facilities that fuel Berry College Student Enterprises — from a bike shop to a bed-and-breakfast to a working farm with crops and livestock — giving entrepreneurial students the chance to run (or even launch) a small business.

OUTDOOR RECREATION: Want to get outside? You've come to the right place. Rent a kayak. Book a campsite. Learn orienteering. Take a hike to clear your head (*you have 88 miles of trails from which to choose*). We'll provide the gear, maps, guides and acreage.

FINE AND PERFORMING ARTS SPACES: Whether singing, dancing, acting, building sets, playing for the orchestra or giving a standing ovation, Berry students embrace the creative impulse, supported by 7 performance spaces, 14 practice rooms and 8 studio spaces across campus.

ATHLETICS: From our 131,000-square-foot fitness center to our gleaming pool (with observation seating) to a football stadium so majestic we call it Valhalla, the Berry campus is an athlete's paradise.

WORK A JOB.

Distinguishing our culture and education since 1902, Berry's LifeWorks program gives all students the opportunity to log **EIGHT SEMESTERS OF PROFESSIONAL DEVELOPMENT EXPERIENCE** so they can earn money while learning on the job and developing into dream employees.

HOW IT WORKS

Everyone starts at a **Level 1 (entry level)** position and works their way up from there, as high as **Level 5 (program director)**. Regardless of the type of work, you'll gain valuable skills and experience at every step.

The result of four years of intensive, built-in professional development, our graduates are known for being **CONFIDENT, SELF-MOTIVATED, RESPONSIBLE CITIZENS** with an **UNSHAKABLE WORK ETHIC** and **UNCOMPROMISING CHARACTER**.

Level 1: DIG IN

WHAT YOU DO

Mow the grass. Answer the phones. Serve the lunch. In other words: the critical nuts-and-bolts business of making Berry run.

WHAT YOU GAIN

A solid backbone. Down-to-earth grit. Dependability. The humility and steady work ethic that employers look for. And maybe some cooking skills.

WORK POSSIBILITIES

Grounds Crew Member, Housekeeper, Postal Clerk, Pre-K Assistant, Ceramics Studio Assistant, Outdoor Recreation Assistant, Social Media Assistant



GLORY IS BUILT ON DOGGEDNESS.



Level 2: STEP UP

WHAT YOU DO

Take on more challenging aspects of the job, learning a specialty and working with others to accomplish complex tasks.

WHAT YOU GAIN

Time management. Problem-solving. Teamwork.

WORK POSSIBILITIES

Event Coordinator, Athletics Trainer, Financial Services Assistant, Ropes Course Technician, IT Network Operations Assistant, Science Lab Assistant, Theatre Scene Shop Technician, Prospect Research Assistant, Strength and Conditioning Assistant



THE KEY TO PERSONAL SUCCESS IS LEARNING HOW TO DEPEND ON OTHERS.

BUILD A LIFE.



Level 5: LEAD

WHAT YOU DO

Oversee a program. Manage a staff. Conduct reviews. Track budgets. Address challenges. Demonstrate positive results.

WHAT YOU GAIN

Accountability. Judgment. Fearlessness.

WORK POSSIBILITIES

Horse Barn Director, Nutrition Specialist, Computer Lab Director, Science Lab Director, Campus Ministry Leader, Chief Building Supervisor, Student Admissions Counselor, Newspaper Editor-in-Chief, Financial Planning Analyst



THE STAKES ARE HIGHER WHEN THE BUCK STOPS WITH YOU — AS ARE THE REWARDS.



Level 3: CONTRIBUTE

WHAT YOU DO

Work in a research lab. Help edit the campus newspaper. Up your involvement and increase your responsibilities.

WHAT YOU GAIN

Discipline. Self-confidence. Analytical chops.

WORK POSSIBILITIES

Accounting and Finance Specialist, Genetics Reproduction Manager, Photo Editor, Social Media Manager, Carbon Neutrality Assistant, Veterinary Assistant, Campus Ministry Coordinator, Personal Fitness Trainer



THE BIG PICTURE COMES INTO FOCUS WHEN YOU PAY ATTENTION TO THE IMPORTANT DETAILS.

Level 4: MANAGE

WHAT YOU DO

Shift from learning the ropes to showing others how to climb them. There's no better way to cement what you've learned than teaching it to someone else.

WHAT YOU GAIN

Responsibility. Diplomacy. Discernment.

WORK POSSIBILITIES

News Producer, Grounds Crew Supervisor, Chemical Inventory Manager, Advanced Peer Educator, Predictive Analytics Specialist, IT Helpdesk Supervisor, Athletic Concessions Manager, Coordinator of Volunteer Services, Dance Company Manager, Fitness Supervisor



GUIDING OTHERS DEEPENS YOUR OWN CAPACITY.

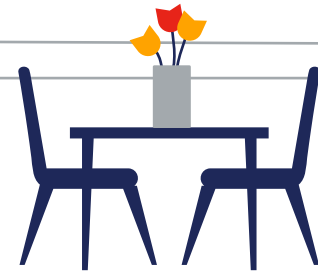
- Every one of Berry's **180 DEPARTMENTS EMPLOYS STUDENTS**, providing options that bolster resumes by building practical skills and intangible attributes that contribute to success in every profession.
- Academic Support and Research
 - Animal Care
 - Arts and Theatre
 - Athletics/Fitness/Recreation
 - Business Consulting
 - Business Operations
 - Communication and Media Arts
 - Community Engagement
 - Education (pre-K-8)
 - Environmental Sustainability
 - Event Planning
 - Graphic Design
 - Hospitality
 - Laboratory Support
 - Library Services
 - Marketing
 - Medical Services
 - Philanthropy
 - Publications - Writing/Editing
 - Public Relations/Communications
 - Religion/Chaplain's Office
 - Skills and Crafts
 - Student Services
 - Technology
 - Tutoring



ENCOUNTER NEW IDEAS.

THE OTHER HALF OF YOUR BERRY EDUCATION UNFOLDS BEYOND THE CLASSROOM WALLS.

You'll spend every day for four years living, learning, discussing, debating, discovering, exploring, absorbing, convening, communing and otherwise experiencing life with a concentrated gathering of smart, engaged and fascinating people.



COMMUNITY CULTURE

There's just something about this place. Our students are **WARM, KIND, WELCOMING** and **GENUINELY HAPPY** to be here.

OUTDOOR RECREATION

Cheaply RENT WHATEVER EQUIPMENT YOU NEED TO EXPLORE OUR STUNNING CAMPUS. Camp, hike, cycle, canoe, fish, hunt or ride horseback on campus. Join off-campus climbing, kayaking and standup paddleboarding adventures.



FINE AND PERFORMING ARTS

The creative impulse is everywhere at Berry, from our classrooms to our makerspaces to the **DOZENS OF PERFORMANCES, TALKS, FILM SCREENINGS, WORKSHOPS AND GALLERY EXHIBITS** by Berry students and visiting artists each year.

10 GALLERY SHOWS

3 MAINSTAGE THEATRICAL PRODUCTIONS

2 DANCE CONCERTS

40+ LIVE MUSIC PERFORMANCES

15 MASTERCLASSES AND SEMINARS (led by industry professionals)

65-70 LECTURES (across disciplines)

5-10 FILM SCREENINGS AND DISCUSSIONS

FITNESS



The Cage Center, a 131,000-square-foot facility, seats nearly 2,000 for varsity athletics, and also contains a natatorium with observation seating, a fitness center, racquetball courts and an indoor track. Classes in yoga, Zumba, Barre, cycling and other classes are offered weekly.

PERSONAL TRAINING IS FREE to students, either individually or in small peer groups.

RESIDENTIAL LIFE

89% OF STUDENTS LIVE ON CAMPUS, walking or biking from place to place, each residence hall a microcommunity with its own identity, spirit and pride of ownership. Resident advisors suggest resources or help you through a bad day. An absence of Greek life means A SOCIAL SCENE THAT'S OPEN AND WELCOMING TO ALL.



CLUBS AND ACTIVITIES

Berry's 70+ STUDENT-RUN CLUBS and ACTIVITIES create opportunities for involvement and leadership in performing arts, government, service, media, religious life and celebration of culture.



ATHLETICS

Berry athletes are genuinely kind but fiercely competitive when the whistle blows or the first pitch flies. **23 NCAA DIVISION III VARSITY TEAMS** channel the trademark Berry work ethic into thrilling effort and consistent success — to the tune of **23 CONFERENCE CHAMPIONSHIPS OVER THE PAST FIVE YEARS**. Off the field, coaches, LifeWorks supervisors and professors work together to help students maintain a healthy balance of athletic schedules, on-campus work and academic commitments. Non-athlete students support Berry's teams by running game-day operations, overseeing concessions and working as athletic trainers.

It's a full-community effort. Just like everything else at Berry.

WOMEN'S	MEN'S
• BASKETBALL	• BASEBALL
• CROSS COUNTRY	• BASKETBALL
• EQUESTRIAN	• CROSS COUNTRY
• GOLF	• FOOTBALL
• LACROSSE	• GOLF
• SOCCER	• LACROSSE
• SOFTBALL	• SOCCER
• SWIMMING & DIVING	• SWIMMING & DIVING
• TENNIS	• TENNIS
• TRACK & FIELD	• TRACK & FIELD
• VOLLEYBALL	

INTRAMURALS

Everything from basketball and soccer to pickleball and Wiffle ball: **40 PERCENT OF BERRY STUDENTS RUN, KICK, SHOOT AND SHOUT THEIR WAY THROUGH APPROXIMATELY 600 GAMES/MATCHES/FEATS OF STRENGTH PER YEAR.**



FAITH

HISTORICALLY NONDENOMINATIONAL, Berry embraces the Christian principles of **INCLUSIVITY** and **SERVICE**, encourages examination of **FAITH** and **VALUES** and is welcoming and respectful to those from all religious backgrounds. Supported by campus ministers and faculty and staff advisors, a variety of student-run religious-life groups provide opportunities for exploration and spiritual growth.



EVENTS

Campus pulses. Especially on weekends. A well-funded student board plans and organizes more than **200 EVENTS EACH YEAR**. Big days and traditions dot the calendar, from Spring Fling to Rage in the Cage to Marthapalooza (the celebration honoring our legendary founder).

TEST THEM EVERY DAY.

JUST IMAGINE WHO YOU'LL BE ON THE OTHER SIDE.

Spoiler alert: You'll still be you, but a version that's way more interesting, compassionate, discerning, diplomatic, responsible, empathetic, generous, insightful, open, reflective, considerate and ... we've run out of space for the rest of the adjectives.

KNOW WHERE YOU'RE HEADED.

THERE IS NO ONE PATH THROUGH BERRY, just a four-year roadmap that helps make sure you'll get from day one to graduation having had the vital experiences that distinguish this education from any other.

REMEMBER YOU'LL ALWAYS BELONG.

The thrilling conclusion?

By the time you walk across that graduation stage, you'll possess a strong sense of inner direction, having discovered a path that springs from your interests and values. You'll have powerful knowledge. And the skills to put it in motion. You'll be a practical thinker. And a creative one. You will be able to understand the needs of others. And you'll know how to work with them. You'll march forward with confidence.

YOU WILL BE READY.



NICK O'CONNOR '18

Investment Consultant, Aon Hewitt, Atlanta, Georgia

Just three years out of college, Nick credits his fast start to professional experience gained leading the Student Enterprises Support Team through Berry's LifeWorks program — and to his work with the Berry Investment Group. An accounting and finance major, Nick learned much about business and life from a network of Berry mentors, from his finance professors to fellow student Aaron Chastain '15, who not only helped Nick hit the ground running in his first year of college but helped him learn the ropes as a fellow analyst at Aon Hewitt.

"Berry gave me a chance to gain relevant professional experience, work ethic and leadership skills, setting myself up for a promising future."



BRIN ENTERKIN '12

Social Entrepreneur, Boulder, Colorado

Recently named to Forbes Magazine's list of 30 under 30 Social Entrepreneurs, Brin's work in Uganda began when she taught microfinancing to Ugandan women and provided comfort to patients with AIDS/HIV as part of a Berry-funded summer learning experience. By graduation, she had founded the nonprofit The African SOUP, an organization that works to help Ugandans channel community development into national impact (and which was featured on CNN and HuffPost). Brin is now chief strategy officer of the Watson Institute, where she is working to create an "Olympic training ground" for social entrepreneurs.

"Anyone, anywhere is capable of helping somebody. I hope people will see that if I can do something like this, anyone can."

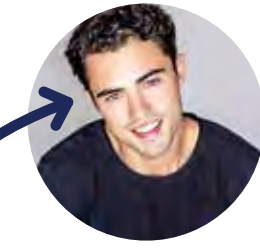


DR. MICHELLE JACKSON LITTLE '12

Family Practitioner, Hamilton Healthcare System, Calhoun, Georgia

A dual biology/Spanish major at Berry, Michelle earned her D.O. at Edward Via College of Osteopathic Medicine (with which Berry enjoys an articulation agreement) before completing her residency at Floyd Medical Center, where she was selected as chief resident. Michelle now practices family medicine at Hamilton Healthcare System. While walking the long road of preparing for her own practice, Michelle has generously donated her time and expertise to mentoring Berry students interested in pursuing careers in medicine.

"I have been trained to do anything within the wide scope of family medicine, and to be among the best in my field."



DARREN BARNET '13

Actor, Santa Monica, California

Just a few years into his career as a professional entertainer, Berry international studies major (and Gate of Opportunity Scholar) Darren has made a name for himself in Hollywood, playing hunky Paxton in the hit Netflix series "Never Have I Ever" (2020). He has also appeared as young Jack on the popular NBC drama "This Is Us," in addition to his work on "Agents of S.H.I.E.L.D." and "Criminal Minds." When not acting or developing scripts, Darren composes original hip-hop music under the stage name "Charlie Sound."

"I love the journey. I am blessed to have an opportunity to pursue a career I am incredibly passionate about."

INTERNSHIPS HELD BY STUDENTS IN RECENT YEARS INCLUDE:

- DELTA AIR LINES
- GEORGIA DEPARTMENT OF HEALTH AND HUMAN SERVICES
- GEORGIA DEPARTMENT OF NATURAL RESOURCES
- THE HOME DEPOT
- HON MANUFACTURING
- JACKSON SPALDING
- THE JOHNS HOPKINS HOSPITAL, NEONATAL INTENSIVE CARE UNIT
- KRAFT ANALYTICS GROUP
- MARCUS AUTISM CENTER
- NEWELL BRANDS
- OAK RIDGE NATIONAL LABORATORY
- PIRELLI TIRE NORTH AMERICA, LLC
- SHEPHERD SPINAL CENTER
- SIERRA CLUB
- SMITHSONIAN INSTITUTION
- TENNESSEE AQUARIUM

GRADUATE AND PROFESSIONAL SCHOOLS WHERE BERRY GRADUATES ARE CURRENTLY STUDYING INCLUDE:

- AUBURN UNIVERSITY
- CINCINNATI CONSERVATORY OF MUSIC
- CLEMSON UNIVERSITY
- DUKE UNIVERSITY
- EMORY UNIVERSITY
- GEORGIA INSTITUTE OF TECHNOLOGY
- MERCER SCHOOL OF MEDICINE
- STANFORD UNIVERSITY
- UNIVERSITY OF FLORIDA
- UNIVERSITY OF GEORGIA
- UNIVERSITY OF GEORGIA COLLEGE OF VETERINARY MEDICINE
- UNIVERSITY OF MICHIGAN
- UNIVERSITY OF VIRGINIA
- UNIVERSITY OF WASHINGTON IN SEATTLE
- VANDERBILT UNIVERSITY
- VIRGINIA POLYTECHNIC INSTITUTE
- WAKE FOREST UNIVERSITY

COMPANIES WHERE RECENT BERRY ALUMNI ARE CURRENTLY WORKING INCLUDE:

- AMAZON.COM
- AON
- ARAMARK
- BUREAU OF LAND MANAGEMENT
- CHICK-FIL-A
- THE COCA-COLA COMPANY
- DELOITTE
- DUKE UNIVERSITY GLOBAL HEALTH INSTITUTE
- EMORY HEALTHCARE
- GEORGIA-PACIFIC
- THE HOME DEPOT
- THE JOHNS HOPKINS HOSPITAL
- KAISER PERMANENTE
- LL BEAN
- LABCORP
- NIKE
- STATE FARM INSURANCE
- TURNER STUDIOS
- USDA
- THE WALT DISNEY COMPANY

99% of 2019-2020 graduates report that a Berry education led to a job or acceptance to graduate or professional school.

82% completed a significant research or internship experience.

35% studied or traveled abroad.

59% held a level 4 or level 5 job, logging significant managerial or supervisory experience.

Admitted to professional schools at the following rates:

MEDICINE: **98%**

LAW: **96%**

VETERINARY: **79%**

74% of May 2020 bachelor degree recipients reported having a job or acceptance to graduate school at graduation day.

Statistics accurate as of 9/1/2020

**SEE
YOURSELF HERE.**

**KNOW ANYTHING
IS POSSIBLE.**

**COMPARISONS FAIL.
THERE'S ONLY ONE BERRY.**

This place is a unicorn, but fortunately for you, the kind that isn't imaginary.

THE SOLUTION: Come see us. Bring your open mind and a pile of questions. We'll show you around and let you sit in on a class. Take a close look. Talk to our students. Get a sense of this culture. Even if you're not able to fully describe it.

To learn more about visiting options or to schedule a trip to meet the unicorn:

BERRY.EDU/VISIT

ADMISSION

We're on the same page, you know.

You're looking for a college that will let you explore your interests, learn and live with interesting and inspiring people and devote yourself to the things you love best — while preparing you for success (and happiness) in life.

We're looking for smart and motivated students who want to be active participants in their own educations. People who will contribute their ideas and energy to this community. People who crave exposure to new viewpoints and experiences. Who are willing to work hard. Who are eager to dive in.

We've told you about Berry. Now it's your turn. The best applications move quickly past the grades and scores (important but not the full picture) to the essence of you as a person, student, teammate, mentor and friend.

So tell us. Who are you? What would you bring to our classrooms and community?

We can't wait to find out. Here's the link. (Do your thing!)

BERRY.EDU/APPLY

FINANCIAL AID

Yes, college is a significant investment, and yes, there are many forms of financial help available. But let's start with the most important point:

The Berry education gives you not only a powerful degree, but also four years of professional experience — while equipping you with a network of lifelong mentors and a set of powerful skills that will distinguish you in your first job and every job thereafter.

An investment looks different when considered in terms of its value.

To help lower college costs, we offer a series of scholarships. You'll be automatically considered when you apply for admission.

We also offer need-based financial assistance to help meet the financial need of families for whom the cost of Berry represents a stretch.

For much more (and constantly updated) information on all of the above:

BERRY.EDU/AID

Berry College does not discriminate on the basis of race, creed, color, sex, age, disability, or national or ethnic origin in employment, administration of its educational policies, admissions policies, scholarships and loan programs, and athletic and other college-administered programs.

In compliance with the Jeanne Clery Disclosures of Campus Security Policy and Crime Statistics Act (Clery Act), the Berry College Annual Security and Fire Safety Report is available at berry.edu/CampusSafetyReport.



**YOU COULD CHOOSE
NOT TO READ THIS BROCHURE,
BUT THAT WOULD BE KIND OF
LIKE CHOOSING NOT TO READ THE
END OF A REALLY GOOD BOOK.**

(Spoiler Alert: The really good stuff lies ahead.)



**BERRY
COLLEGE**

Office of Admission
PO Box 490159
Mount Berry, GA 30149-0159