

The Pajama Game (cover)
Berry College Theatre Company
April 2025



VISUAL & PERFORMING *arts*

Calendar of Events
2025 | 2026



A low-angle photograph of a stone building with a clock face. The sun is shining brightly from the upper right, creating a large, colorful lens flare that dominates the right side of the image. The building is made of rough-hewn stone blocks. A clock face with Roman numerals is visible on the upper left. In the foreground, there are dark green leaves and red berries, possibly holly, framing the bottom and left sides of the image. The sky is blue with some white clouds.

*The artist vocation
is to send light into
the human heart.*

George Sand

A letter from **ADAM HAYES**

Dear Friends,

We are delighted to offer you a dynamic and robust season of events in 2025–2026! This season, our events capture a variety of artistic and cultural displays by our art, dance, music, and theatre programs. Many of our offerings feature nationally recognized artists in a wide variety of genres and styles.

A number of events will feature Berry students who share their talents and demonstrate their capacity for learning and appreciation of the arts. There are also opportunities to see and hear our fantastic faculty artists.

It is our hope that you will take advantage of the many fine cultural offerings and engage, share, and participate in the arts at Berry College! Thank you for your continued support, and we look forward to seeing you at our next event.



Dr. Adam Hayes, Director

Department of Visual and Performing Arts



Sweeney Todd: The Demon Barber of Fleet Street

Berry College Opera, January 2025





August

Su	Mo	Tu	We	Th	Fr	Sa
					1	2
3	4	5	6	7	8	9
10	11	12	13	14	15	16
17	18	19	20	21	22	23
24	25	26	27	28	29	30
31						



Music



Theatre



Dance



Art



Embodiment IV (invitational group exhibition)



**Gregory Climer, Katie Knoeringer, Jess Self,
Brandon C. Smith**

August 25–September 18
Mon.–Thurs., 9 a.m.–5 p.m.
Fri., 9 a.m.–3 p.m.
Moon Gallery

Embodiment IV features artwork that references the human figure in a myriad of ways from a diverse range of artists. The four artists featured utilize traditional quilting with digital tools, paper collage, felted wool and mixed textiles, and pastel with charcoal on paper. The figure becomes a place to explore representations of masculinity, a celebration of the everyday world, storytelling and archetypes, and a site of both the grotesque and beautiful.



Artist's talk

Jess Self

September 8
5:30–6:30 p.m.
McAllister Auditorium

September

Su	Mo	Tu	We	Th	Fr	Sa
	1	2	3	4	5	6
7	8	9	10	11	12	13
14	15	16	17	18	19	20
21	22	23	24	25	26	27
28	29	30				



Faculty Showcase Recital

Faculty Artist Series

September 4, 7 p.m.
Bell Recital Hall

The Berry College Music Program begins its concert season with an introduction of our very own! Come enjoy an evening of solo and chamber music featuring our faculty performing artists.



Kenosha Kid

September 16, 7 p.m.
Bell Recital Hall



For two decades, Kenosha Kid has carved out a singular voice in creative music — rooted in jazz but fearlessly wide-ranging in sound and spirit. Led by guitarist and composer Dan Nettles of Athens, Georgia, the band blends groove, melody, and improvisation into music that's just as likely to nod

to Monk and Ellington as it is to Hendrix and Willie Nelson. This tour brings together an all-star lineup from across the country, including Marlon Patton (drums, Nashville), Robby Handley (bass, Atlanta), Jacob Wick (trumpet, Mexico City), and Greg Sinibaldi (saxophone, Seattle) — each a powerful and distinctive musical voice in their own right. Together, they offer a deep, adventurous concert experience that connects innovation with joy.

Core Ensemble



Berry College Concert Series

September 18, 7 p.m.
Bell Recital Hall

Las Magnificas is a chamber music theatre piece for a singing actress and an instrumental trio. The production explores the lives and times of two towering figures in Latin American cultural history: Cuban singer Celia Cruz and Chilean singer Violeta Parra. Text by Marjorie Agosin. (This event is co-sponsored by Sigma Delta Pi in celebration of Hispanic Heritage Month.)



Eurasia Trio



Guest Artist Series

September 25, 7 p.m.
Bell Recital Hall

The Eurasia Trio is a musical ensemble composed of Qiao Chen Solomon (violin), Martin Gueorguiev (cello), and Paolo André Gualdi (piano). They are known for performing piano trios, particularly those by German Romantic composers Clara Schumann and Fanny Mendelssohn. The trio recently released their debut album, *Unveiled*, featuring works by these composers.



matter
(invitational
group exhibition)



**Brian R. Jobe, Hanna Newman,
Kristen Tordella-Williams**
September 22–October 16,
Mon.–Thurs., 9 a.m.–5 p.m.
Fri., 9 a.m.–3 p.m.
Moon Gallery

matter features the work of three artists who enlist a range of materials in the creation of sculpture/installations that address themes of tension, permanence, memory, perception, and labor. Brian Jobe assembles materials that are stacked together to create an experience for the viewer that connects with the history of the objects and free association. Hanna Newman uses a diverse range of materials (ceramics, metal, wood, found object, video) to create life-size fragments of lived spaces. Kristen Tordella-Williams references women's craft combined with industrial materials (cast iron) to explore the material play between strength and fragility.



Artist's talk

Kristen Tordella-Williams
September 22
5:30–6:30 p.m.
McAllister Auditorium



October

Su	Mo	Tu	We	Th	Fr	Sa
			1	2	3	4
5	6	7	8	9	10	11
12	13	14	15	16	17	18
19	20	21	22	23	24	25
26	27	28	29	30	31	



Berry Winds presents *Echoes Through Time*

October 7, 7 p.m.
Bell Recital Hall



Berry Winds presents their inaugural concert of the season, offering a captivating journey

through music history. This dynamic program features works spanning from the elegance of the Renaissance to the bold innovations of the modern era. Audiences will experience a rich tapestry of

styles and sounds, showcasing the ensemble's versatility and artistry. Join us for an evening that celebrates the timeless power of wind band music across the centuries.



community, culture and music: an evening with **Chris Thile**

Gloria Shatto Lecture Series

October 8

7 p.m.

Cage Center Arena

Tickets Required: scan QR code

Acclaimed Grammy Award-winning mandolinist, singer, songwriter, composer, and MacArthur Fellow recipient of the prestigious “Genius Grant,” Chris Thile is a multifaceted musical talent, described by *The Guardian* as “that rare being: an all-round musician,” and hailed by NPR as a “genre-defying musical genius.” Thile is a founding member of the highly influential string bands Punch Brothers and Nickel Creek and has collaborated with countless luminaries from Yo-Yo Ma to Fiona Apple to Brad Mehldau. For four years, Thile hosted public radio favorite “Live from Here with Chris Thile” (formerly known as “A Prairie Home Companion”). With his broad outlook, Thile creates a distinctly American canon and a new musical aesthetic for performers and audiences alike, giving the listener “one joyous arc, with the linear melody and vertical harmony blurring into a single web of gossamer beauty” (*New York Times*).

Over the last year, Thile has been touring with Nickel Creek in support of the critically acclaimed 2023 release *Celebrants*, and captivating audiences

with a playfully ambitious biographical composition entitled *ATTENTION!* (a narrative song cycle for extroverted mandolinist and orchestra).

Additionally, he has been focused on the production of a new musical variety show, “The Energy Curfew Music Hour.” Created with Claire Coffee and featuring Punch Brothers, season one is available on Audible and all podcasting platforms. Most recently, Chris debuted a new one-man show, “The Manhattan Variations,” in NYC’s Little Island. It’s about finding oneself in a little cocktail bar on the Lower East Side.



CE CREDIT

Berry College Wind Ensemble presents *Sound Mind*



October 9, 7 p.m.
Bell Recital Hall

The Berry College Wind Ensemble presents a reflective program that explores the emotional depth and complexity of the human experience. Through a thoughtfully curated selection of works, the concert traces a journey from tension and uncertainty to clarity and strength. Each piece offers a unique perspective on personal growth, inner balance, and the resilience found in moments of challenge. This performance invites audiences to connect through music that uplifts, inspires, and affirms the shared path toward well-being.

Berry College Theatre Company presents *The Valkyries Cabaret*

Directed by Jennifer Bradford

October 9–11, 7 p.m.

October 12, 2 p.m.

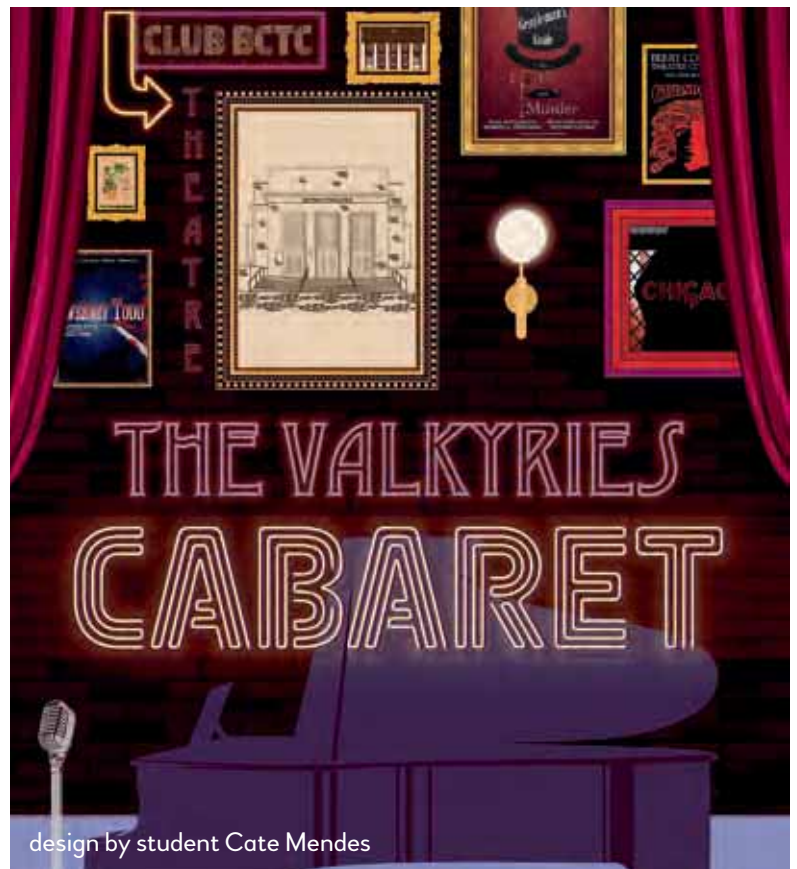
Sisters Theatre

Tickets: [BERRY.EDU/ONSTAGE](https://berry.edu/onstage)

or call 706.236.2263



The Valkyries Cabaret is the musical theatre event you don't want to miss! We will be showcasing some of our most talented performers at Berry in an exciting revue generated by Berry students. You will hear a variety of songs from the musical theatre canon that reflects the challenges and rewards of the American experience. Come be entertained and engage in the joyful celebrations during Mountain Day Weekend.





Kris Carlisle, piano

Faculty Artist Series

October 12, 2 p.m.

Bell Recital Hall



As the continuation of his “American Evolution” project, Dr. Kris Carlisle presents the second phase of newly composed piano works entitled “The American Evolution: LGBTQ+ Voices of the 21st Century.” This exciting program of new music will include several world premiere performances.



Berry Singers presents *America Singing*

October 14, 7 p.m.

Bell Recital Hall



Join us for *America Singing*, a concert celebrating the rich and diverse musical heritage of the United States. From the lush harmonies of Samuel Barber's *Reincarnations* to the powerful *Four Civil War Poems* by Jeffrey Van, the program also features beloved American folksongs and African American spirituals. Reflecting the vastness of our nation's cultural and geographic landscapes, this performance highlights voices that have shaped the American experience. The choirs will be joined by Artist-in-Residence and Berry College Guitar Professor Sean Thrower for an evening of music that is both deeply rooted and profoundly moving.

Bent Frequency

Berry College Concert Series

October 16, 7 p.m.

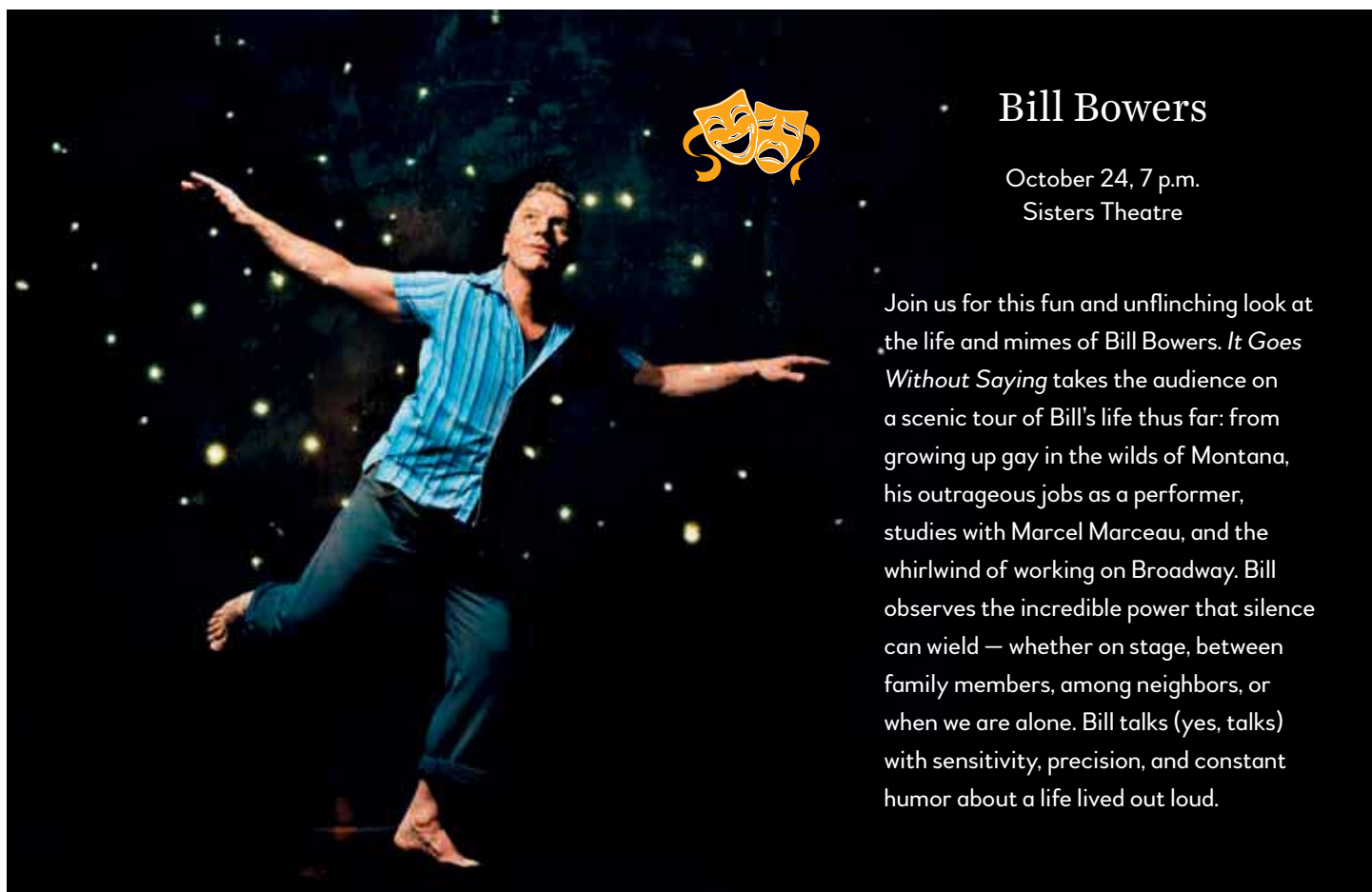
Bell Recital Hall



Hailed as “one of the brightest new music ensembles on the scene today” by *Gramophone* magazine, Atlanta-based Bent Frequency has established itself as the Southeast’s premier contemporary music ensemble. Founded in 2003, Bent Frequency brings the avant-garde to life through adventurous and socially conscious programming, cross-disciplinary collaborations, and community engagement. A champion of historically under-recognized composers, the group’s events aim to be inclusive of their diverse and dynamic community,



ushering the contemporary music experience from the strict formality of the concert hall into the fresh air of artistic expression and experimentation.



Bill Bowers

October 24, 7 p.m.

Sisters Theatre

Join us for this fun and unflinching look at the life and mimes of Bill Bowers. *It Goes Without Saying* takes the audience on a scenic tour of Bill’s life thus far: from growing up gay in the wilds of Montana, his outrageous jobs as a performer, studies with Marcel Marceau, and the whirlwind of working on Broadway. Bill observes the incredible power that silence can wield — whether on stage, between family members, among neighbors, or when we are alone. Bill talks (yes, talks) with sensitivity, precision, and constant humor about a life lived out loud.

Ecologies and Elements in the American South (solo exhibition)

Chuck Hemard

October 27–November 20
Mon.–Thurs., 9 a.m.–5 p.m.
Fri., 9 a.m. to 3 p.m.
Moon Gallery

Chuck Hemard's work explores our relationships between each other and the natural world through photography. Subjects include remnants of old growth longleaf pines, a "mud puddle" formed at the entrance to a land development project, or landscapes formed by highway exit ramps/interchanges.

Artist's talk

Chuck Hemard
October 27
5:30–6:30 p.m.
McAllister Auditorium



Chuck Hemard is an associate professor and chair of the Art & Art History department at Auburn University in Alabama. He earned his Master of Fine

Arts degree in photography from the University of Georgia and BA in psychology from the University of Southern Mississippi. Hemard exhibits his work

throughout the southeastern United States including the Museum of Contemporary Art of Georgia and the Ogden Museum of Southeast Art in New Orleans.

Spirits in Song: A Halloween Choral Celebration

October 30, 7 p.m.
Bell Recital Hall



Join the Berry College Choirs for an enchanting evening of music in the beautiful Bell Recital Hall. This fall concert features the Treble Choir and the Tenor-Bass Choir in a program that

highlights the richness of their unique sounds. With selections that celebrate the season — from the beauty of autumn to the mystery and mischief of Halloween — this concert promises an engaging blend of the whimsical and the haunting. Whether you're a fan of the festive or the eerie, *Spirits in Song* will be a musical treat for all ages. Come enjoy the magic of fall through song!



November



Su Mo Tu We Th Fr Sa

						1
2	3	4	5	6	7	8
9	10	11	12	13	14	15
16	17	18	19	20	21	22
23	24	25	26	27	28	29

Berry College Symphony Orchestra

November 11, 7 p.m.
Bell Recital Hall

Celebrating dance! The Berry College Symphony Orchestra will be performing instrumental interpretations of dances. The dance arrangements will feature music by Brahms, Dvorak, Faure, and other well-known composers.



Berry College Jazz Ensemble

November 13, 7 p.m.
Bell Recital Hall

The Berry College Jazz Ensemble is renowned for its tight and energizing performances, outstanding soloists, and talented student arrangers. Directed by Artist-in-Residence John David, the ensemble performs music ranging from exciting new contemporary jazz works to swinging classics.

Berry Winds presents *Migration Symphony*

November 18, 7 p.m.
Bell Recital Hall



Berry Winds will share a compelling performance of *Migration Symphony* by acclaimed American composer Adam Schoenberg. This evocative work explores themes of movement, transformation, and the human experience through lush harmonies and cinematic textures. Known for his emotionally resonant and accessible style, Schoenberg invites listeners on a powerful musical journey. Join us for an unforgettable evening as Berry Winds brings this contemporary masterpiece to life.



Berry College Wind Ensemble Winter Concert with Kellie Henry

November 20, 7 p.m.
Bell Recital Hall



The Berry College Wind Ensemble presents an evening of distinguished repertoire, including the *Concertino* for flute by Cécile Chaminade and performed by Artist Affiliate Faculty member Kellie Henry. Composed in 1902, this virtuosic and expressive work was commissioned by the Paris Conservatoire and remains one of the most celebrated pieces in the flute repertoire. Chaminade, a pioneering French composer, was among the first women awarded the Légion d'Honneur for her contributions to music.

Kellie Henry is an active orchestral flutist, performing as second flute with the Asheville Symphony and the newly appointed Principal Flute of the Georgia Ballet Orchestra. She substitutes regularly with ensembles throughout Atlanta and the southeastern U.S. Along with being an artist affiliate of flute at Berry College, Henry leads a private flute studio in northeastern metro Atlanta and currently serves as president of the Atlanta Flute Club. She holds an Artist Diploma from the Schwob School of Music at Columbus State University and a Bachelor of Music in Flute Performance from Valdosta State University.





Holiday Events

Holiday Harmonies at Berry

November 22, 3 p.m.
Bell Recital Hall



Ring in the season with an afternoon of joyful music from the Berry College Choirs. This festive program brings together the Treble Choir, Tenor-Bass Choir, and student-led a cappella ensembles for a dynamic

mix of holiday cheer. From timeless carols and choral classics to upbeat favorites and modern a cappella flair, there's something for everyone to enjoy. Whether you're kicking off your holiday traditions or simply looking for an afternoon of beautiful music, this concert is sure to warm your heart and lift your spirits. Come celebrate the season — Berry style!



Holiday Wonders

December 5, 7 p.m.
December 6, 2 and 7 p.m.
Sisters Theatre

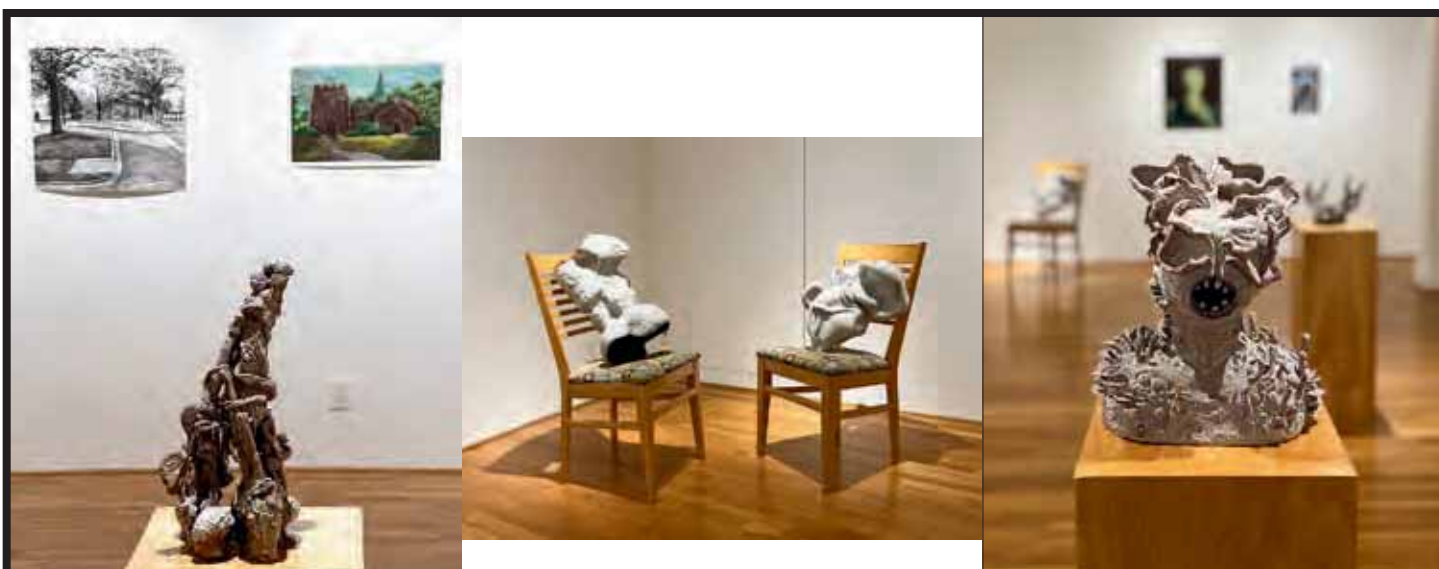


Celebrate the holidays with Berry College Dance Company in this diverse dance

concert presenting ballet, modern, tap, and jazz dance! Fun for the whole family, this show will include faculty and student choreography performed by our Berry College dance students. Link to purchase tickets will be posted at cur8.com (search Berry College).

December

Su	Mo	Tu	We	Th	Fr	Sa
	1	2	3	4	5	6
7	8	9	10	11	12	13
14	15	16	17	18	19	20
21	22	23	24	25	26	27
28	29	30	31			



Select (student group exhibition)

November 24–December 4, Mon.–Thurs., 9 a.m.–5 p.m.

Moon Gallery

Reception: December 2, 11 a.m.



Select features artwork made in current Berry studio art classes including two-dimensional design, drawing, sculpture, ceramics, digital imaging, and painting. Inclusion in the show is based on input from students in each class. At the reception, members of the Berry art faculty will facilitate a discussion about the work on display with guests.

A Holiday Celebration: Choir & All That Jazz

December 4 and 5, 7 p.m.
Bell Recital Hall



Experience a one-of-a-kind holiday concert as the Berry Singers and the Berry Jazz Band come together for a festive evening of music that blends tradition and swing. The first half of the program features the Berry Singers in works that honor the rich musical traditions of the holiday season, offering moments of beauty, reflection, and joy. Then get ready to groove as the Berry Jazz Band and Berry Voices light up the stage with classic holiday jazz favorites. From elegant to electric, this concert promises something for every listener. Don't miss this joyful fusion of voices and vibes! The event is free, but tickets are required. Call 706.236.2289 to reserve tickets.



Senior Pre-Thesis Exhibition (student group)



December 8–12, Mon.–Thurs., 9 a.m.–5 p.m., Fri., 9 a.m.–1 p.m.
Moon Gallery

The Senior Pre-Thesis Exhibition features final projects from the pre-thesis Advanced Studio Problems class. These projects are comprised of small bodies of work developed by each student rather than class assignments. Students explore a wide range of subjects, concepts, techniques, and materials through a range of practices such as graphic design, painting, ceramics, digital illustration, and drawing. The following students will have their work displayed: Lillian Barnes, Nancy Daniel, Alana Hennon, Casey Holloway, Harley Hovers, Nicolle Arias Madrigal, and Dai Parker.



January



Su	Mo	Tu	We	Th	Fr	Sa
				1	2	3
4	5	6	7	8	9	10
11	12	13	14	15	16	17
18	19	20	21	22	23	24
25	26	27	28	29	30	31

homegrown (community group exhibition)



January 15–29, Mon.–Thurs., 9 a.m.–5 p.m.
Fri. 9 a.m.–3 p.m.
Moon Gallery
Reception: Thurs., January 29, 5–7 p.m.
Moon Gallery

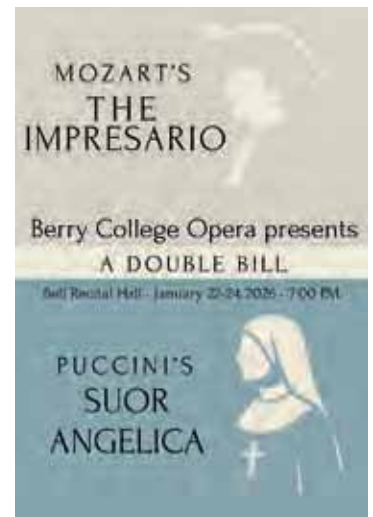
homegrown celebrates the many talents in the Berry community that includes current students, staff, faculty, and spouses/partners. All forms of original artwork are accepted from traditional painting, photography, and ceramics to woodworking, quilts, and origami. Participants provide up to three pieces to share with our community and launch the spring season.

Berry College Opera presents W.A. Mozart's *The Impresario* and Giacomo Puccini's *Suor Angelica*



Directed by Scott Willis
January 22–24, 7 p.m.
Bell Recital Hall

Berry College Opera presents a captivating double bill: Mozart's *The Impresario*, a delightful backstage comedy where rival divas clash in hilarious fashion, and Puccini's *Suor Angelica*, a heartrending tale of love, loss, and spiritual redemption set within the quiet walls of a convent. Join us for an evening of laughter, longing, and beautiful music.





Paul Merkelo Masterclass

January 27, 11 a.m.
Bell Recital Hall



Paul Merkelo is the principal trumpeter of the Montreal Symphony Orchestra. A JUNO-nominated recording artist with six solo albums, including releases on the SONY and NAXOS labels, Merkelo will be on campus to speak to our music students about his extraordinary career. This event is free and open to the public!



Trio Melange

Horn/Voice Trio Guest Artist Series

January 27, 7 p.m.
Bell Recital Hall



Dr. James Boldin, horn; Dr. Richard Seiler, piano; and Dr. Claire Vangelisti, soprano, are faculty members at the University of Louisiana Monroe dedicated to

promoting and performing music for soprano, horn and piano. Past performances include the 2017 and 2018 New Music on the Bayou Summer Festivals, the 48th International Horn Symposium, the International Women's Brass Conference, and guest recitals at Centenary College of Louisiana, Stephen F. Austin State University, and the University of Texas at Tyler. The concert will include a variety of works, including music by Gaetano Donizetti, Emma Kent Wine, Franz Lachner, and Arnold Cooke.



Berry College Theatre Company presents *She Kills Monsters*

Play by Qui Nguyen

Directed by Christine Fuchs

January 29–31, 7 p.m.

February 1, 2 p.m.

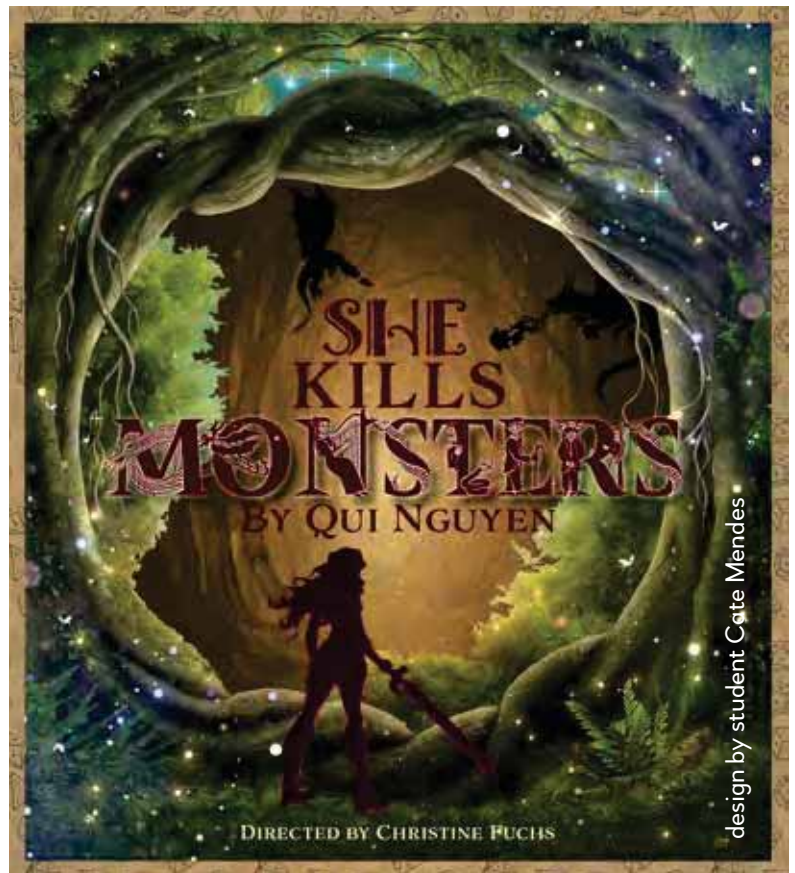
Sisters Theatre

Tickets: BERRY.EDU/ONSTAGE

or call 706.236.2263



Monsters, magic, and 90's nostalgia, oh my! In Qui Nguyen's *She Kills Monsters*, Agnes discovers her late sister Tilly's Dungeons & Dragons notebook, and she's thrown into an action-packed quest full of sword fights, evil cheerleaders, and fierce warrior women. This play is a love letter to family, friendship, and embracing your inner s/hero. Get ready for a wild ride that asks: how well do we ever truly know the people we love?



Interference (solo exhibition)

Kate Roberts

February 2–26

Mon.–Thurs., 9 a.m.–5 p.m.

Fri., 9 a.m.–3 p.m.

Moon Gallery



Kate Roberts focuses on the temporal nature of life through the use of clay and porcelain. She examines the fleeting and fragile through meticulously crafted forms such as large scale vessels and simulated landscapes. Roberts is an associate professor of art at the University of Memphis. She earned her Bachelor of Fine Arts and Master of Fine Arts degrees from the New York State College of Ceramics at Alfred University. Roberts exhibits her work internationally and has completed numerous residencies including the Archie Bray Foundation for the Ceramic Arts in Montana.



Artist's talk

Kate Roberts

February 2

5:30–6:30 p.m.

McAllister Auditorium



February

Su	Mo	Tu	We	Th	Fr	Sa
1 •	2 •	3 •	4 •	5 •	6 •	7
8 •	9 •	10 •	11 •	12 •••	13 •	14
15	16 •	17 •	18 •	19 •	20 •	21
22 •••	23 •	24 •	25 •	26 •	27	28



John David's Jazz All-Stars featuring Scott Willis

Berry College Concert Series

February 12, 7 p.m.
Bell Recital Hall



Renowned drummer and Berry College Artist-in-Residence John David brings his latest aggregation of world-class musicians to present an evening of music entitled *The Resolution of Romance*. Perfect for Valentine's weekend this concert will feature David's jazz trio performing ballads and blues from *The Great American Songbook* including guest soloist appearances from Berry faculty artists: Scott Willis, Indra Thomas, Adam Hayes, Gary Paulo, and Sean Thrower.

Visual & Performing Arts at Berry

The Berry College Department of Visual & Performing Arts incorporates the disciplines of the visual arts, dance, music, and theater, and our mission is to provide a quality education and practical experiences for our students while enriching the artistic and cultural presence on our campus, the community, and the world. Degrees of study include theatre, music performance, music education, music business, studio art, art history, and art education.



March

Su	Mo	Tu	We	Th	Fr	Sa
1 •	2 •	3 ••	4 •	5 •	6 •	7
8	9 •	10 •	11 •	12 •	13 •	14
15	16 •	17 •	18 •	19 •	20 •	21
22 •	23 •	24 •	25 •	26 •	27 •	28
29 •	30 •	31 •				

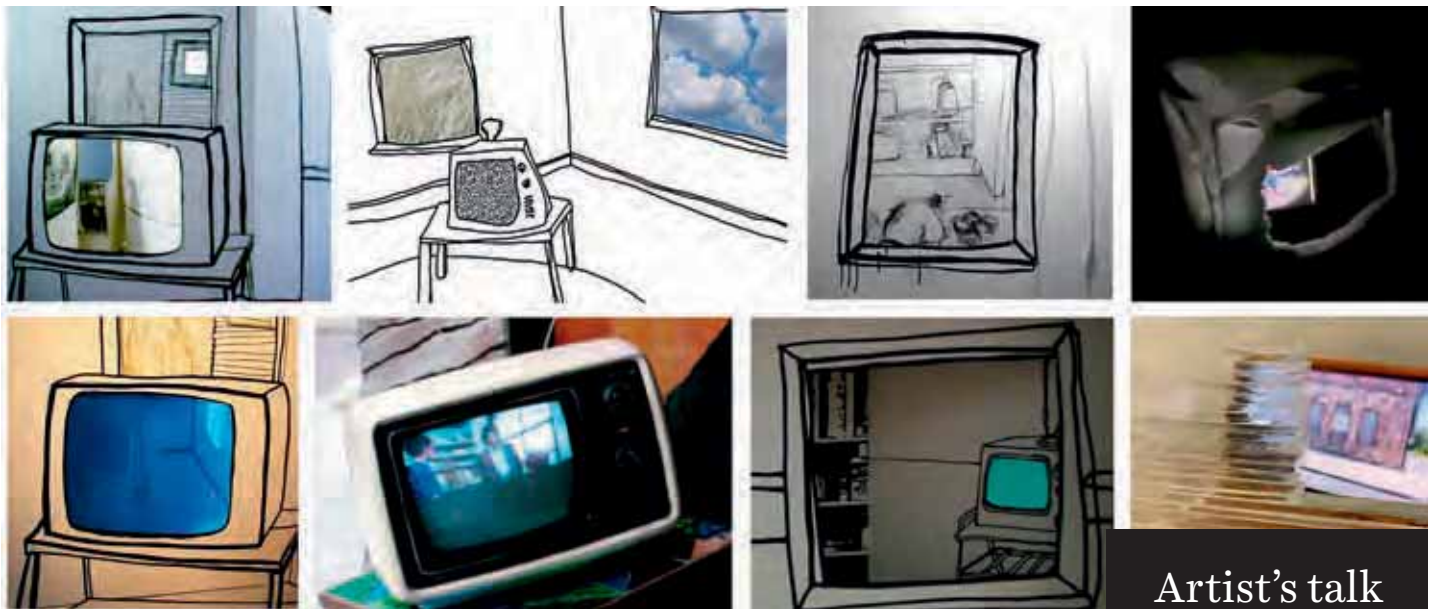
Berry Winds presents *Crosswinds*

March 1, 3 p.m.
Bell Recital Hall



Berry Winds presents an exciting program of music that includes cross-cultural influences in wind literature. This concert highlights works that draw from the rhythmic, melodic, and harmonic languages of diverse cultures, presenting an evening of complex and engaging melodies. The program serves as both a celebration of global diversity and a critical reflection on the role of music in shaping intercultural understanding.





Looking Out (solo exhibition)

Nell Ruby

March 2–April 9

Mon.–Thurs., 9 a.m.–5 p.m.

Fri., 9 a.m.–3 p.m.

Moon Gallery



Nell Ruby is a mixed-media installation artist who seeks out beauty from the ordinary. Fueled by an attitude

of experimentation, she integrates traditional forms of expression with technology to explore juxtapositions between, for example, the public and the private. Ruby is a professor of practices in the department of creative arts at Agnes Scott College in Decatur, Georgia. She earned her Bachelor of Arts degree from Rice University and her Master of

Fine Arts
from

Washington University. Recent exhibitions include work in *Rescue: Waste and Redemption* at the Lyndon House Arts Center in Athens, Georgia, and *Positive/Negative 40* National Juried Art Exhibition at Eastern Tennessee State University.

Artist's talk

Nell Ruby

March 2

5:30–6:30 p.m.

McAllister Auditorium

Berry College Wind Ensemble presents *Women in Music*



March 3, 7 p.m.

Bell Recital Hall



Join the Berry College Wind Ensemble for a powerful evening of music celebrating the voices of women composers. This special concert features works by trailblazing artists such as Florence Price, the first African American woman to have a symphony performed by a major orchestra, and Carol Brittin Chambers, known for her vibrant compositions for wind band. The program highlights a diverse range of styles and stories, showcasing the depth and brilliance of women in music. Don't miss this inspiring performance that honors creativity, resilience, and the enduring impact of women in the arts.

Berry Singers Homecoming Concert: *Echoes of Portugal*

March 22, 7 p.m.
Bell Recital Hall



Join the Berry Singers for a special Homecoming Concert following their successful tour of Portugal! This inspiring program features music by American composers, along with beloved folksongs and spirituals that reflect the rich and diverse soundscape of the United States. The concert will also highlight the artistry of guitarist Sean Thrower, who accompanied the choir on their international journey. Come experience the music that captivated audiences abroad and celebrate the return of Berry's premier vocal ensemble with an evening of passion, spirit, and song.



April



Music



Theatre



Dance



Art



Su	Mo	Tu	We	Th	Fr	Sa
			1	2	3	4
5	6	7	8	9	10	11
12	13	14	15	16	17	18
19	20	21	22	23	24	25
26	27	28	29	30		



Elementary & Middle School Choir Festival

(not open to the public)
April 2, 4 p.m.
Ford Dining Hall



The Berry College Music Program will host the annual Elementary & Middle School Choir Festival. Students from around Georgia will rehearse throughout the day, culminating with a performance at 4 p.m. in Ford Dining Hall. There will be a seventh and eighth grade mixed voices choir and a fifth and sixth grade treble choir. The mixed choir will be directed by Dr. Stefanie Cash, director of music education at Berry College, and the treble choir will be directed by Dr. Michele Champion Sampson, music specialist at Addison Elementary in Cobb County, Georgia.

Pi Kappa Lambda Honors Recital and Symposium

April 7, 7 p.m.
Bell Recital Hall



The Pi Kappa Lambda Honors Recital is a celebration of talent and academics, which are the foundation of Pi Kappa Lambda, an honor society in music. Each year, every applied teacher is given the opportunity to nominate one student from their private studio who has shown outstanding work on their applied instrument. In addition, the music faculty who are members of Pi Kappa Lambda elect new members from the junior and senior classes who are presented at the culmination of the recital. Join us for a program of stellar music and the presentation of our newest members of Pi Kappa Lambda.

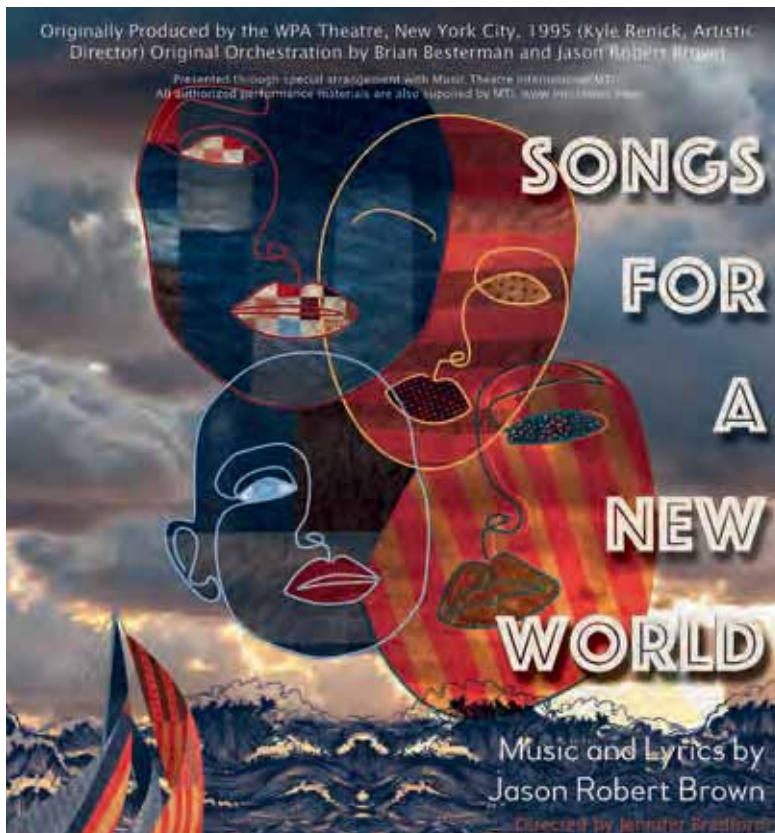


Berry College Symphony Orchestra

April 9, 7 p.m.
Bell Recital Hall



TV vs. Movies. Which is better, music from television shows or movies? The Berry College Symphony Orchestra will perform arrangements from current and past TV shows and movies.



design by student Cate Mendes

Songs for A New World



Music and lyrics by Jason Robert Brown

Directed by Jennifer Bradford

April 8–11, 7 p.m.

April 12, 2 p.m.

Sisters Theatre

Tickets: BERRY.EDU/ONSTAGE

or call 706.236.2263

Jason Robert Brown's *Songs for a New World* is a favorite among musical theatre practitioners. Brown said it best: "It's about one moment. It's about hitting the wall and having to make a choice, or take a stand, or turn around and go back." The musical takes you through a series of singular moments throughout four characters' lives. Their choices around life, love, and inevitable change move this abstract musical forward like a fast train. How will they conquer new life challenges? What will they sacrifice? Who will they choose? How will they change the beautiful new world around them?

Berry College Choirs Spring Concert



April 14, 7 p.m.
Bell Recital Hall

Join us for the Berry College Choirs Spring Concert, held in the Bell Recital Hall. Directed by Drs. Stefanie Cash and Paul Neal, this performance features the Treble Choir and the Tenor-Bass Choir in a program of diverse choral selections. The concert highlights the unique sound and character of each ensemble and reflects the work and growth of the students throughout the semester. We invite you to enjoy an evening of thoughtful and engaging music presented by these talented student musicians.





Annual Student Honors Show (student group exhibition)

April 15–23, Mon.–Thurs., 9 a.m.–5 p.m., Fri., 9 a.m.–3 p.m.
Moon Gallery

Juror's talk/reception: Wednesday, April 15, 5–6 p.m., Moon Gallery



The Annual Student Honors Show features work made in Berry College studio art classes during the 2025-26 academic year. Acceptance into the show is determined by Atlanta artist Nell Ruby, who reviews digital images of work submitted by students and then makes the selections. At the reception, Professor Ruby will discuss her choices and announce artwork receiving special recognition.



Berry College Jazz Ensemble

April 16, 7 p.m.
Bell Recital Hall



The Berry College Jazz Ensemble is renowned for its tight and energizing performances, outstanding soloists, and talented student arrangers. Directed by Artist-in-Residence John David, the ensemble performs music ranging from exciting new contemporary jazz works to swinging classics.

Berry College Wind Ensemble presents *Itineraries*



April 19, 3 p.m.
Bell Recital Hall

The Berry College Wind Ensemble invites you on a musical journey with a concert inspired by the spirit of

travel and exploration. This program features works that evoke the excitement of new destinations, the beauty of diverse landscapes, and the stories found along the way. From sweeping vistas to bustling cities, each piece captures a unique sense of place and movement. Join us for an evening of adventure through sound, as we celebrate the joy of discovery and the connections made across distances.



Haydn's *Little Organ Mass* at First Presbyterian



April 18, 7 p.m.
First Presbyterian Church, Rome, Georgia

Join the Berry Singers for a special performance of Joseph Haydn's *Little Organ Mass* at the newly renovated organ of First Presbyterian Church in Rome. This elegant and joyful work will be presented with organ and string ensemble, featuring Berry College Church Organist Steven Wooddell. This concert celebrates both the brilliance of Haydn's sacred music and the rich sound of the restored instrument. Don't miss this inspiring collaboration of voices and instruments in one of Rome's most historic worship spaces.



Berry Winds Spring Concert



April 21, 7 p.m.
Bell Recital Hall

Join Berry Winds for an evening of classic and contemporary wind band music. The concert will feature trumpeters Adam Hayes and Joel Treybig as they perform Kevin McKee's *Under Western Skies* for trumpet duo and winds. Dr. Hayes is professor of music and director of the Department of Visual and Performing Arts at Berry College and Dr. Treybig is professor

of music and associate director of the School of Music at Belmont University. The two have collaborated several times previously, including two albums for two trumpets and organ with Nashville organist Andrew Risinger. *Lux et Lapis* and *Awakenings* are released internationally on Curvepoint Media. The trio also performed as featured artists for the 2015 International Trumpet Guild Conference. Hayes is a Shires Trumpets Performing Artist and Treybig is a Yamaha Trumpets Performing Artist.



photo by Nico Klementzos

Spring into Dance



April 24, 7 p.m.
April 25 and 26, 2 p.m.
Sisters Theatre

Jump into spring with Berry College Dance Company! This performance features a variety of stories and expressions told by faculty and student choreographers in a wide variety of dance genres. Link to purchase tickets will be posted at cur8.com (search Berry College).



Senior Thesis Exhibitions (student group exhibition)

Lillian Barnes, Nancy Daniel, Alana Hennon, Casey Holloway, Harley Hovers, Nicolle Arias Madrigal, and Dai Parker

April 27–May 1; May 4–8, Mon.–Thurs., 9 a.m.–5 p.m.,
Fri., 9 a.m.–1 p.m.

Moon Gallery

The senior thesis exhibition serves as the capstone experience for art majors completing the studio art concentration. The exhibitions represent the culmination of a student's involvement in the art program, providing them with the opportunity to develop and implement their own research agenda. The resulting body of work is then prepared and installed for public display accompanied by a written statement about the work.

About Berry College

Nationally recognized for academic excellence and as an outstanding educational value, Berry is an independent, comprehensive liberal arts college of approximately 2,200 students. The college offers an exceptional education that balances closely mentored intellectual exploration, practical learning, and character development. Its 27,000-acre campus, the world's largest, provides unmatched resources for its students' professional development.

Visual & Performing Arts Faculty

Adam Hayes, D.M.A., Director

Art

J. Bradley Adams, M.F.A.
Tom Biondolillo, M.F.A.
Dennis Ritter, M.F.A.
Virginia Troy, Ph.D.

Dance

Natalie Berry M.F.A.
Sara Pecina, M.F.A.

Music

Ruth Baker, M.M., M.M.E
Kris Carlisle, D.M.A.
Stefanie Cash, Ph.D.

John David, M.M.
Michael DeSousa, D.M.A.
Tina Erickson, M.M.
Chris Ferebee, D.M.A.
Alyssa Grey, Ph.D
Eric Hanson, D.M.A.
Kellie Henry, M.M.
Ellie Jenkins, D.M.A.
Paul Neal, D.M.A.

Kathryn Nobles, B.M.
Gary Paulo, M.M.
Lisa Reams, M.F.A.
Indra Thomas, A.D.
Sean Thrower, M.M.
Thomas Trinh, M.M.
Emily Wetzal, D.M.A.

Scott Willis, D.M.A.

Stephen Wooddell, M.M.

Theatre

Jennifer Bradford, M.F.A.
Alice Bristow, M.F.A.
Peter Friedrich, M.F.A.
Christine Fuchs M.F.A.
Mandy Thomas, M.F.A.

Visual & Performing Arts Staff

April Allen, administrative assistant
Gina Hicks, M.A., staff accompanist
Shelley Reid, B.A. staff accompanist
Kyla Zollitsch, M.M., staff accompanist



BERRY.EDU

Department of Visual & Performing Arts

Berry College

P.O. Box 490309 · 706.236.2289