

college PROFILE

2019-2020

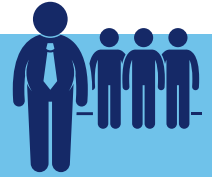


Office of Admission ♦ admissions@berry.edu ♦ 1.800.237.7942 ♦ BERRY.EDU

► COLLEGE AND FACULTY

27,000 acres (world's largest campus)

~2000 enrolled undergraduate students



Student-faculty interaction at Berry was ranked in the top **10% nationally** by seniors completing the National Survey of Student Engagement.



18 students per class on average

11:1 student-to-faculty ratio

97% of faculty have a Ph.D.

82% average of freshmen who return sophomore year

Majors and Minors

75+ majors, minors, concentrations and pre-professional programs

► EXPERIENCE AND RESULTS

98% * of all students work at some point during their time at Berry

80% * of May graduates completed a significant research or internship experience

74% * of students with job offers on graduation day

96% * of pre-law students are accepted to law school

79% * of pre-vet students are accepted to veterinarian school

98% * of pre-med students are accepted to medical school

98% * of graduates say a Berry degree led to entry into a job or grad or professional school

* Visit BERRY.EDU/STATS for the figures we use to back these statistics.

► CAMPUS LIFE



23 NCAA Division III sports teams



88 miles of trails



70+ student clubs



92% of first-year students live on campus



50+ fine arts performances and art exhibits annually

▶ APPLICANT PROFILE



1130-1300 SAT middle 50%

23-30 middle 50% ACT composite



60% graduated in top 25% of high school class

3.78 average high school GPA recalculated

BERRY COLLEGE CODES:

ACT 0798
SAT 5059
FAFSA 001554



48 states

12 countries



▶ APPLICATION TIMELINES



Deadlines:

Early Action: Nov. 1

Regular Decision: Jan. 15

To apply, visit [BERRY.EDU/APPLY](https://berry.edu/apply).

Required materials for Early Action and Regular Decision:

- Application
- Official Transcript
- SAT and/or ACT scores
- Essays

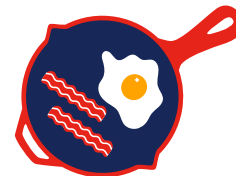
▶ TUITION, FEES AND ROOM & BOARD (2019-2020)



\$37,246 - TUITION and FEES



\$7,360 - ROOM (traditional)



\$5,710 - BOARD (unlimited)

2019 BERRY MERIT SCHOLARSHIP RANGE:
**\$8,000–
\$22,000**

2019 NEED-BASED GRANT RANGE:
**\$2,500–
\$12,500**

NET PRICE CALCULATOR:
BERRY.EDU/NPC

▶ FINANCIAL AID INFORMATION

At Berry, we use our \$35 million aid budget to invest in your experience. With more than 90 percent of students receiving aid, know that we will partner with you to make sure you are aware of all of your options. To be considered for financial aid, follow these two easy steps (Yes, it is that simple!):

1. Complete your application for admission.
2. File the Free Application for Federal Student Aid (FAFSA) beginning on **October 1**. Berry's FAFSA code is 001554.
3. BONUS: Talk with your admissions counselors about the numbers and your budget for college.

For more information on aid visit [BERRY.EDU/AID](https://berry.edu/aid).