

2020- 2021 BACK TO SCHOOL



BCEMS is looking forward to welcoming Berry families back to campus for the 2020-2021 school on Thursday, July 30, 2020.

BCEMS will continue operating under advisement and leadership by the Berry College Risk Management Team and the Berry College Health Center.

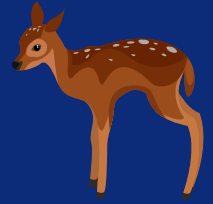
BCEMS will follow guidelines established by the Georgia Department of Education in partnership with the Georgia Department of Public Health.

BACK TO SCHOOL TOWN HALL MEETING Monday, July 27, 3:00pm Via ZOOM

Check BCEMS Parent email for links and information.

The Town Hall Meeting will be recorded and uploaded to the school blog.

Practicing Prevention



- Modified arrival and dismissal procedures (map will be provided).
- Designated entrance and exits by grade level.
- Limited access to buildings for visitors.
- Health screenings for all individuals entering buildings including students, faculty, staff, and college student workers.
- Visitors to BCEMS must make an appointment and agree to a health screening.
- Intensified and enhanced cleaning regimens.
- Increased ventilation.
- Self-contained classrooms with space considerations.
- Multiple outdoor learning spaces and outdoor play zones.
- Water fountain conversion to bottle-fill stations.
- No large group gatherings.
- Art, Spanish, PE, and Music will take place in individual classrooms.
- Use of Hill Dining Hall will be temporarily suspended.
- Kids' College/After School Care temporarily relocated to Mountain Campus.
- Masks: All BCEMS students will be required to have two personal face protectors at school each day.
- BCEMS will follow Berry College's policy: Masks or face coverings are required in any public context: classrooms, academic and administrative buildings. Face coverings are also required in open air areas if people are not separated by at least six feet.

Transporting Students



- Bus service will be temporarily suspended.
- Morning drop off at BCEMS: 7:30 - 8:10am.
- Instruction will begin at 8:15am.
- Afternoon pick up at BCEMS: 2:50 - 3:30pm.
- Carline procedures and route will be modified to allow for the increase in traffic (map will be provided).
- Please allow for extra time to drive safely on campus while new traffic patterns and health screenings are practiced.
- Temporarily limit field trips to on-campus locations (buses can transport one class to a Berry College location).