

2020-2021

# RETURN TO SCHOOL PLAN



BCEMS is looking forward to welcoming Berry families back to campus for the 2020-2021 school year with a revised start date of July 30, 2020. Students will attend five full school days per week. Working under guidance from the Berry College Risk Management Team, the Georgia Department of Health, the Georgia Department of Education, and the Center for Disease Control, BCEMS has developed a plan for returning to school that focuses on the safety, health, and well-being of our students.

Many of these changes are temporary and will be adjusted accordingly when appropriate. BCEMS will continue to weigh the needs of our families and students with the latest information from our governing agencies and make modifications as needed.



## Important Revisions to Calendar

- New Start Date: Thursday, July 30, 2020.
- Parent Conferences via Zoom: October 7, 2020.
- Fall Break: October 8-9, 2020.
- Thanksgiving Break: November 25-27, 2020.
- December 4, 2020: Early Dismissal
- December 7-11 & 14-18 may be used as In-School Make Up days as needed.

## TOWN HALL MEETINGS

Via Zoom

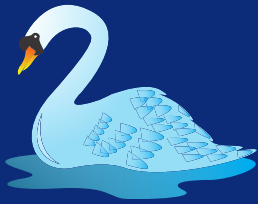
Tues., June 30: 12:00-1:00pm

Tues., June 30: 6:30-7:30pm

Wed., July 1: 10:00-11:00am

Check BCEMS Parent email for links  
and information.

# Transporting Students



- Bus service will be temporarily suspended.
- Morning Drop off will begin at 7:30am at BCEMS.
- Instruction will begin at 8:15am.
- Afternoon Pick up at BCEMS will continue until 3:30pm.
- Carline procedures and route will be modified to allow for the increase in traffic (map will be provided).
- Temporarily limit field trips to on-campus locations (buses can transport one class to a Berry College location).

# Practicing Prevention



- Modified arrival and dismissal procedures.
- Limited class sizes to provide for physical distancing.
- Limited access to buildings for visitors.
- Temperature and symptom checks for all individuals entering buildings including students, faculty, staff, and college student workers.
- Visitors to BCEMS must make an appointment and agree to temperature check.
- Intensified and enhanced cleaning regimens.
- Increased ventilation.
- Self-contained classrooms with space considerations.
- Multiple outdoor learning spaces and outdoor play zones.
- Water fountain conversion to bottle-fill stations.
- No large group gatherings.
- Modifications to Lunch and Assembly procedures.
- Rerouted hallway traffic.
- Kids' College/After School Care temporarily relocated to Mountain Campus.
- Masks: All BCEMS students will be required to bring a personal cloth face protector to school each day.
- Isolation room for individuals who develop symptoms.
- Ongoing education for faculty, staff, students, and families about best practices for prevention.