

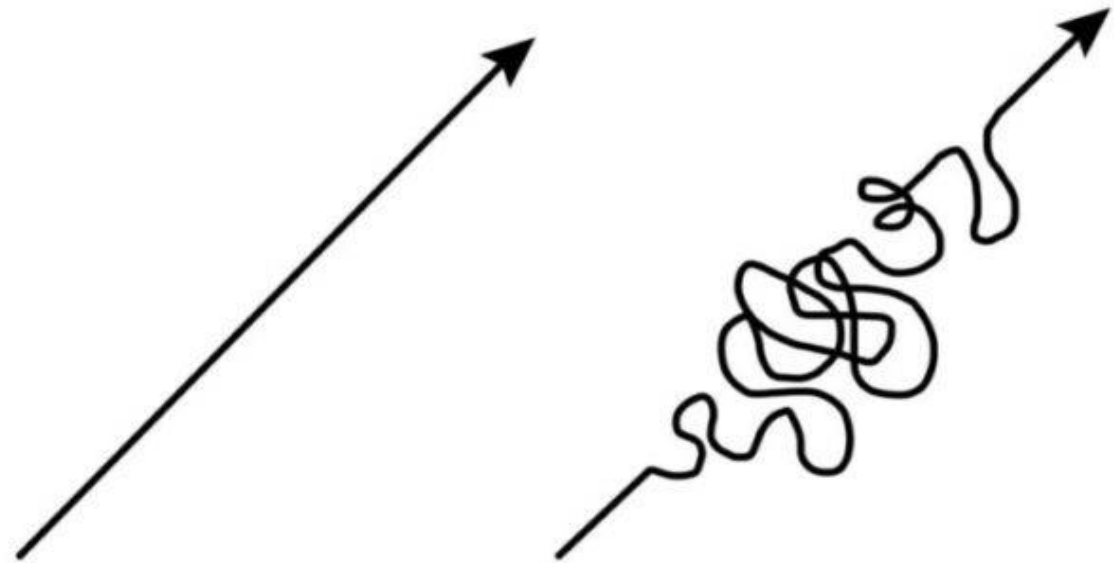


BERRY
COLLEGE

LifeWorks Program

Figuring out what you want to do with your life / career (next)

Phillip Edge
Director of LifeWorks



What people
think it
looks like

What it
really
looks like

2020-25 First Destination Surveys

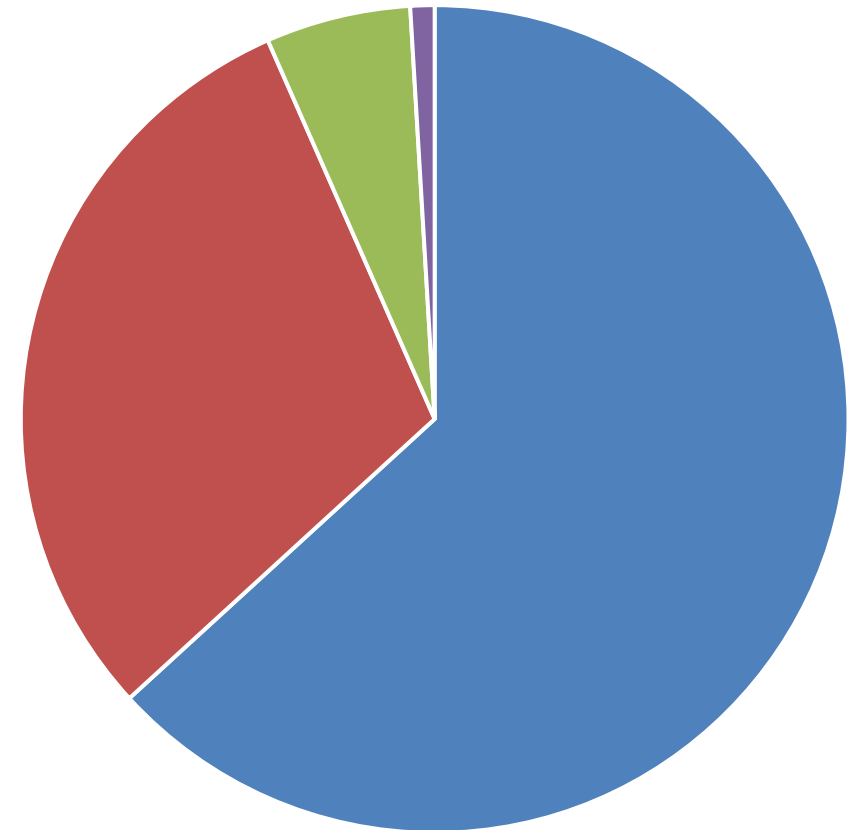
99% of Berry grads had a positive career outcome: either employed, starting a business, or attending graduate school

+85% said LifeWorks Program helped prepare them for their job search & application process

LifeWorks is often ranked as students' most important learning experience



2024 Berry Graduates



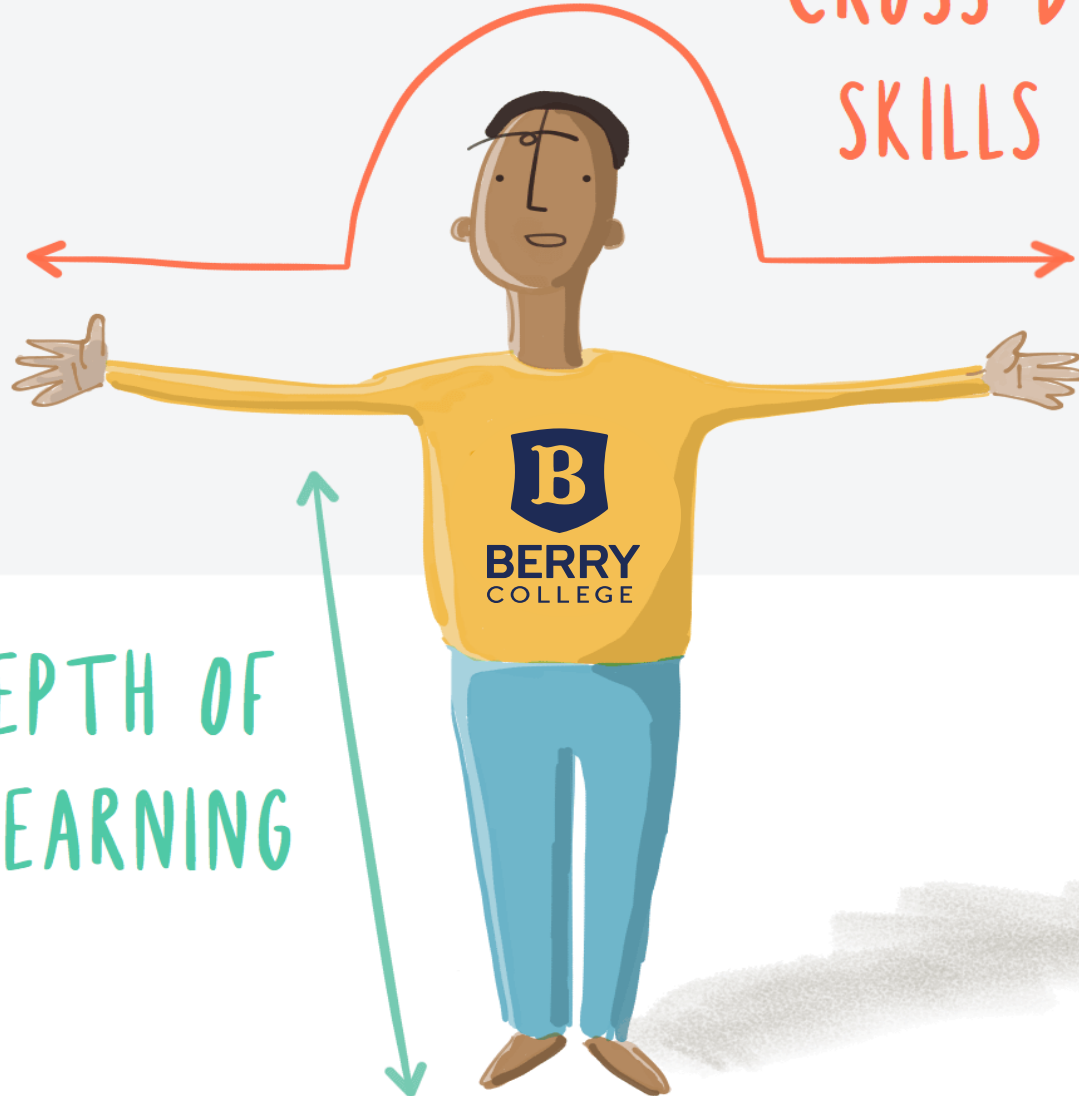
■ Employed ■ Continuing Ed ■ Self Employed ■ Unemployed

Why LifeWorks? Why should students work on campus early & often?



THE
"T-SHAPED"
STUDENT

CROSS DOMAIN
SKILLS & ATTITUDES



THE DEPTH OF
LEARNING

Critical Thinking & Problem Solving

8 Skills Most Desired by Employers (NACE, 2021)

Professionalism & Work Ethic

Oral / Written Communication

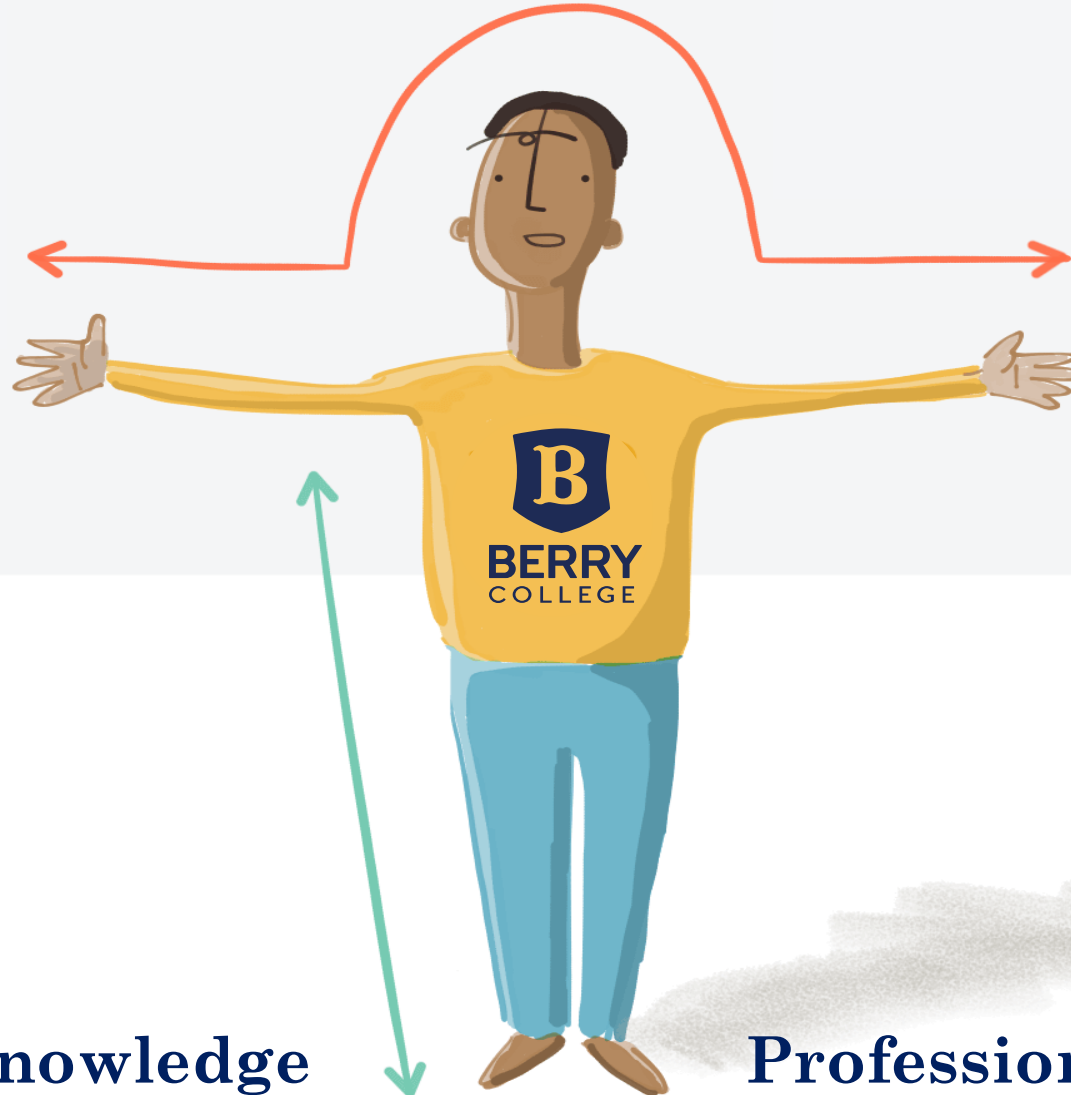
Diversity & Inclusion

Teamwork

Self & Career Development

Leadership

Technology



**Academic Knowledge
(e.g., Psychology major)**

**Professional Knowledge
(e.g., Marketing Asst job)**

FAQs:

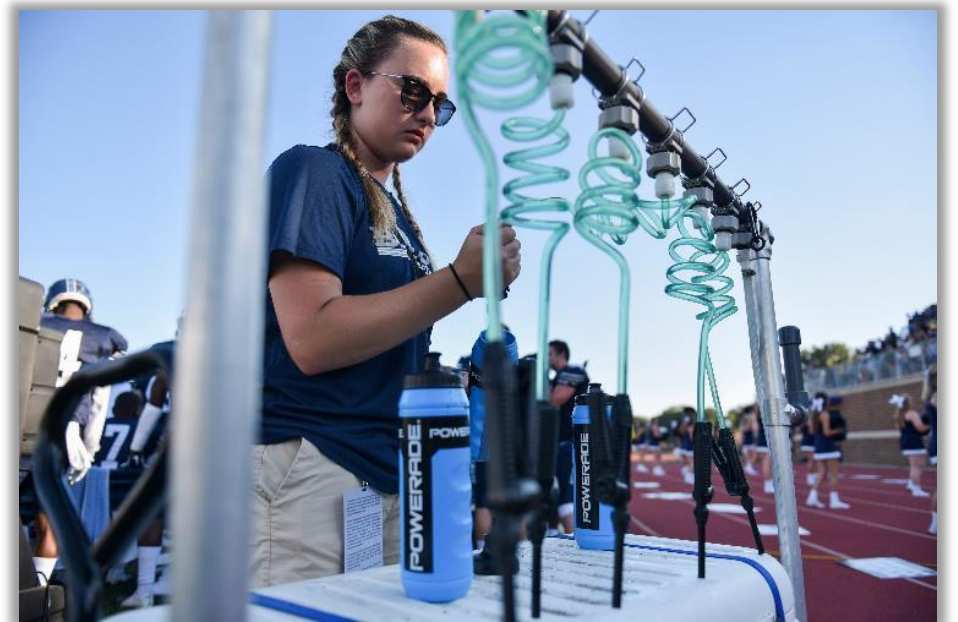
5 Things You Need to Know About Your 1st LifeWorks Job

LifeWorks FAQs

How many hours can I work during my 1st year at Berry?

Up to 10 hours a week

- Average ~6 hours per week
- After 1st year: up to 12 hours per week



LifeWorks FAQs

How much will I be paid in my first LifeWorks job?*

Entry jobs: \$9.25 per hour

Intermediate jobs: \$9.50 per hour

Advanced jobs: \$10.25 per hour

Pre-Professional jobs: \$11.50 per hour

***Some off-campus Community & Industry Jobs / Internships (e.g., Aramark dining, Spires CNAs, etc) pay more**



Community & Industry Internships



THE SPIRES
AT BERRY COLLEGE

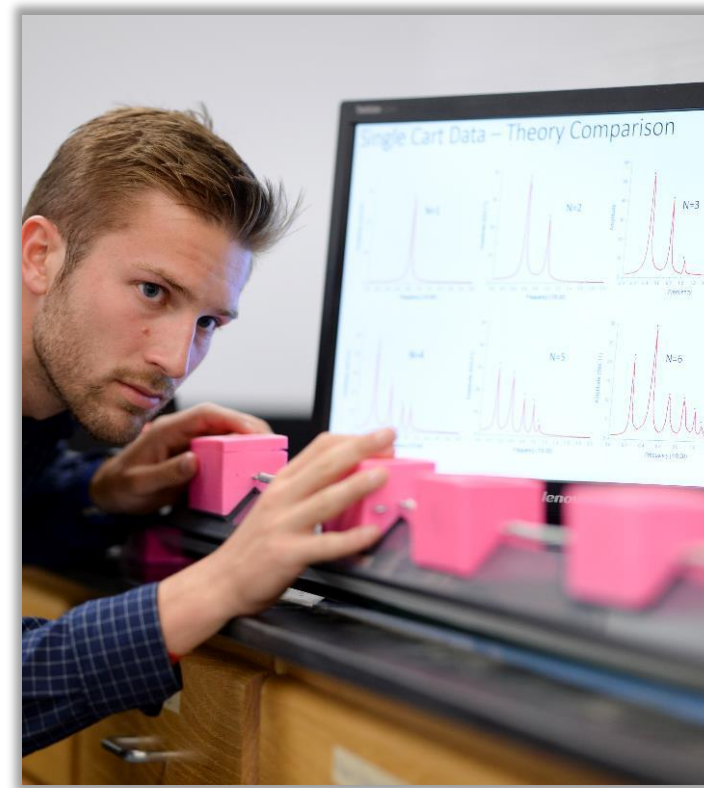


WinShape
Foundation



How do I get / find my 1st LifeWorks job?

- **Our job:** Assign students into a “good fit” 1st LifeWorks job!
- **Your job:** Complete the Student Work Interest Form & PathwayU assessments ASAP...

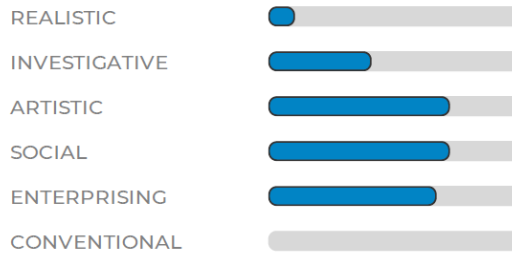


Self / Career Assessments (20 min)



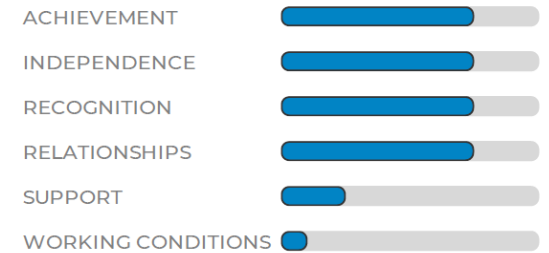
ASSESSMENT Interests

Your primary Interests are **Artistic** and **Social**.



ASSESSMENT Values

Your primary Values are **Achievement** and **Independence**.



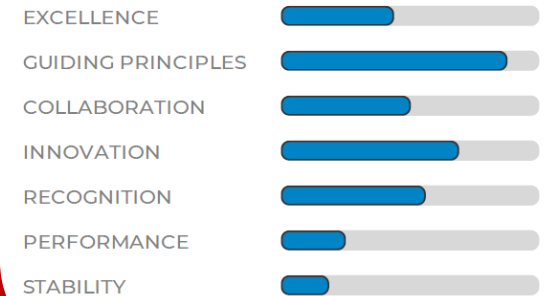
ASSESSMENT Personality

Your Personality Assessment results can be viewed below.



ASSESSMENT Workplace Preferences

Your primary Workplace Preferences are **Guiding Principles** and **Innovation**.



LifeWorks FAQs

When will I find out about / start my 1st LifeWorks job assignment?

LifeWorks Assignments:
Mid July

Supervisor Outreach Week:
Early August

LifeWorks
Orientation: @ Viking
Venture in August



LifeWorks FAQs

What if I don't like my assigned LifeWorks job? When / how can I find another LifeWorks job?

Fall: Dig in!

**Get used to working
Learn what you can**

Spring: LW Free Agent!!

**LW Jobs on Handshake
Personal Career Consultant**



WHO IS YOUR CAREER CONSULTANT?

NO MATTER WHERE YOU ARE ON
YOUR PROFESSIONAL JOURNEY,
MAKE AN APPOINTMENT TODAY!

 Handshake



Sue Dudt

MNS & Charter Schools



Hope Willoughby

Campbell & Evans Schools



Allison Hattaway

Employers & Internships

HOW CAN OUR TEAM HELP YOU TAKE
THE NEXT STEP ON YOUR
PROFESSIONAL JOURNEY?

CAREER CONSULTANTS OFFER ALL
OF THESE
SERVICES & SO MUCH MORE!



MAJOR & CAREER
EXPLORATION



JOB & INTERNSHIP SEARCH
STRATEGIES



PROFESSIONAL DOCUMENT
REVIEWS



NETWORKING &
INTERVIEW PREP

YOUR NEXT STEPS



Complete I-9 verifications



Complete Your PathwayU Assessments



Meet with LifeWorks Supervisor virtually in July / in-person at Viking Venture

Q&A:

Any Lingering Questions About LifeWorks?

The screenshot shows the Berry College LifeWorks Student Resource Center website. At the top left is the Berry College logo. The navigation menu includes links for CAMPUS TOUR, VISIT, APPLY, REQUEST INFO, and GIVE, along with a search icon. The main heading reads "WELCOME TO THE VIRTUAL LIFEWORKS STUDENT RESOURCE CENTER!". Below this is a paragraph explaining the purpose of the resource center. A section titled "FREQUENTLY USED TOOLS" contains four cards: "TIMESHEET" (with a "LOG IN HERE" button), "HANDSHAKE" (with a "LOG IN HERE" button), "PATHWAYU" (with a "LOG IN HERE" button), and "TEMPORARY WORK SERVICE" (with a "SIGN UP HERE" button). A sidebar on the left lists "DEVELOPMENT / LIFEWORKS" and other resource center options.



@BerryCPPD



BERRY
COLLEGE